

LSD1 Monoclonal Antibody

Description

Product type	Primary Antibody
Code	BT-MCA0851
Host	Mouse
Isotype	IgG
Size	50ul, 100ul
Immunogen	Purified recombinant human LSD1 protein fragments expressed in E.coli.
Mol wt	N/A
Species reactivity	Human,Mouse,Rat,Pig
Clonality	Monoclonal
Recommended application	WB
Concentration	1 mg/ml
Full name	Lysine-specific histone demethylase 1A
Synonyms	KDM1A; AOF2; KDM1; KIAA0601; LSD1; Lysine-specific histone demethylase 1A; BRAF35-HDAC complex protein BHC110; Flavin-containing amine oxidase domain-containing protein 2

This product is for research use only, not for use in human, therapeutic or diagnostic procedure.

Background

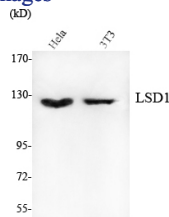
This gene encodes a nuclear protein containing a SWIRM domain, a FAD-binding motif, and an amine oxidase domain. This protein is a component of several histone deacetylase complexes, though it silences genes by functioning as a histone demethylase. Alternative splicing results in multiple transcript variants.

Recommended Dilution

WB: 1:1000 - 1:2000

Not yet tested in other applications.

Images



Western Blot analysis using LSD1 Monoclonal antibody against HeLa, 3T3 cell lysate.

Storage

-20°C for one year

501 Changsheng S Rd, Nanhui Dist, Jiaxing, Zhejiang, China

Tel: 86 21 31007137 | E-mail: save@bt-laboratory.com | www.bt-laboratory.com