

LSD1 Monoclonal Antibody

Description

Product type	Primary Antibody
Code	BT-MCA0852
Host	Mouse
Isotype	IgG
Size	50ul, 100ul
Immunogen	Purified recombinant fragment of human LSD1 expressed in E. Coli.
Mol wt	N/A
Species reactivity	Human,Mouse,Monkey
Clonality	Monoclonal
Recommended application	WB, IHC-p, IF, ELISA
Concentration	1 mg/ml
Full name	Lysine-specific histone demethylase 1A
Synonyms	KDM1A; AOF2; KDM1; KIAA0601; LSD1; Lysine-specific histone demethylase 1A; BRAF35-HDAC complex protein BHC110; Flavin-containing amine oxidase domain-containing protein 2

This product is for research use only, not for use in human, therapeutic or diagnostic procedure.

Background

This gene encodes a nuclear protein containing a SWIRM domain, a FAD-binding motif, and an amine oxidase domain. This protein is a component of several histone deacetylase complexes, though it silences genes by functioning as a histone demethylase. Alternative splicing results in multiple transcript variants.

Recommended Dilution

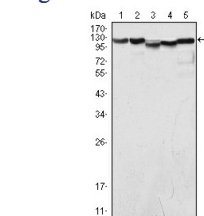
ELISA: 1:10000

IHC: 1:200 - 1:1000

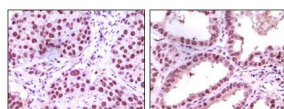
WB: 1:500 - 1:2000

Not yet tested in other applications.

Images



Western Blot analysis using LSD1 Monoclonal antibody against COS (1) HeLa (2) NIH/3T3 (3) A549 (4) and Jurkat (5) cell lysate.



Immunohistochemistry analysis of paraffin-embedded human lung carcinoma (left) and kidney carcinoma (right), showing nuclear localization with DAB staining using LSD1 Monoclonal antibody.

Storage

-20°C for one year

