

Luciferase mouse Monoclonal Antibody(2G11)

Description

Product type	Primary Antibody
Code	BT-MCA0854
Host	Mouse
Isotype	IgG
Size	20ul, 50ul, 100ul
Immunogen	Synthetic Peptide of Luciferase
Mol wt	N/A
Species reactivity	Firefly
Clonality	Monoclonal
Recommended application	WB
Concentration	1 mg/ml
Full name	Luciferase
Synonyms	N/A

This product is for research use only, not for use in human, therapeutic or diagnostic procedure.

Background

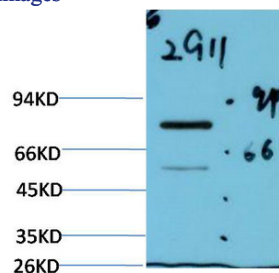
Luciferase from the firefly has become one of the more widely used reporter proteins for the study of gene expression. Luciferase catalyzes a bioluminescent reaction which requires the substrate luciferin as well as Mg^{2+} and ATP. Mixing these reagents with the cell extract containing luciferase, results in a flash of light that decays rapidly. This light can be detected by a luminometer. The total light emission is proportional to the luciferase activity of the sample.

Recommended Dilution

WB: 1:1000-2000

Not yet tested in other applications.

Images



Western blot analysis of Firefly Luciferase Transfected HeLa Cell Lysate using Luciferase Mouse Monoclonal antibody diluted at 1:2000.

Storage

-20°C for one year