

## Luciferase mouse Monoclonal Antibody(7C9)

### Description

Product type	Primary Antibody
Code	BT-MCA0855
Host	Mouse
Isotype	IgG
Size	20ul, 50ul, 100ul
Immunogen	Synthetic Peptide of Luciferase
Mol wt	N/A
Species reactivity	Firefly
Clonality	Monoclonal
Recommended application	WB
Concentration	1 mg/ml
Full name	Luciferase
Synonyms	0

This product is for research use only, not for use in human, therapeutic or diagnostic procedure.

### Background

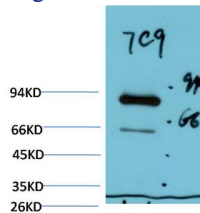
Luciferase from the firefly has become one of the more widely used reporter proteins for the study of gene expression. Luciferase catalyzes a bioluminescent reaction which requires the substrate luciferin as well as  $Mg^{2+}$  and ATP. Mixing these reagents with the cell extract containing luciferase, results in a flash of light that decays rapidly. This light can be detected by a luminometer. The total light emission is proportional to the luciferase activity of the sample.

### Recommended Dilution

WB: 1:1000-2000

Not yet tested in other applications.

### Images



Western blot analysis of Firefly Luciferase Transfected Hela Cell Lysate using Luciferase Mouse Monoclonal antibody diluted at 1:2000.

### Storage

-20°C for one year