

Mammaglobin A Monoclonal Antibody

Description

Product type	Primary Antibody
Code	BT-MCA0860
Host	Mouse
Isotype	IgG
Size	50ul, 100ul
Immunogen	Purified recombinant fragment of human Mammaglobin A expressed in E. Coli.
Mol wt	N/A
Species reactivity	Human
Clonality	Monoclonal
Recommended application	WB, IHC-p, IF, ICC, FCM, ELISA
Concentration	1 mg/ml
Full name	Mammaglobin-A
Synonyms	SCGB2A2; MGB1; UGB2; Mammaglobin-A; Mammaglobin-1; Secretoglobin family 2A member 2

This product is for research use only, not for use in human, therapeutic or diagnostic procedure.

Background

N/A

Recommended Dilution

FC: 1:200 - 1:400

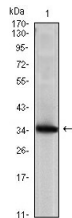
IF: 1:200 - 1:1000

IHC: 1:200 - 1:1000

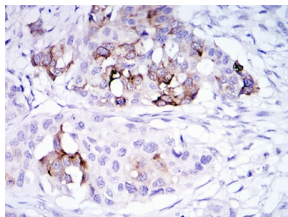
WB: 1:500 - 1:2000

Not yet tested in other applications.

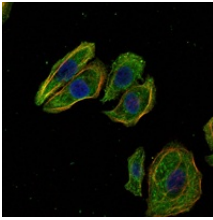
Images



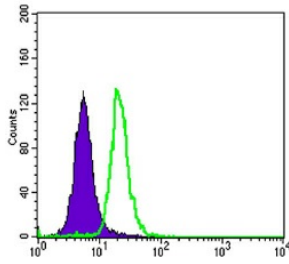
Western Blot analysis using Mammaglobin A Monoclonal antibody against Mammaglobin A recombinant protein (1).



Immunohistochemistry analysis of paraffin-embedded mammary cancer tissues with DAB staining using Mammaglobin A Monoclonal antibody.



Immunofluorescence analysis of HeLa cells using Mammaglobin A Monoclonal antibody (green).
Blue: DRAQ5 fluorescent DNA dye. Red: Actin filaments have been labeled with Alexa Fluor-555 phalloidin.



Flow cytometric analysis of SK-BR-3 cells using Mammaglobin A Monoclonal antibody (green) and negative control (purple).

Storage

-20°C for one year

501 Changsheng S Rd, Nanhu Dist, Jiaxing, Zhejiang, China

Tel: 86 21 31007137 | E-mail: save@bt-laboratory.com | www.bt-laboratory.com