

Mammaglobin A Monoclonal Antibody

Description

Product type	Primary Antibody
Code	BT-MCA0861
Host	Mouse
Isotype	IgG
Size	50ul, 100ul
Immunogen	Purified recombinant fragment of Mammaglobin A expressed in E. Coli.
Mol wt	N/A
Species reactivity	Human
Clonality	Monoclonal
Recommended application	WB, ELISA
Concentration	1 mg/ml
Full name	Mammaglobin-A
Synonyms	SCGB2A2; MGB1; UGB2; Mammaglobin-A; Mammaglobin-1; Secretoglobin family 2A member 2

This product is for research use only, not for use in human, therapeutic or diagnostic procedure.

Background

N/A

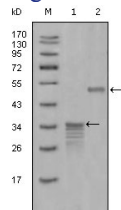
Recommended Dilution

ELISA: 1:10000

WB: 1:500 - 1:2000

Not yet tested in other applications.

Images



Western Blot analysis using Mammaglobin A Monoclonal antibody against full-length GST- Mammaglobin-1 (1) and full-length MBP- Mammaglobin-1 (aa1-193) recombinant protein (2).

Storage

-20°C for one year

501 Changsheng S Rd, Nanhu Dist, Jiaxing, Zhejiang, China

Tel: 86 21 31007137 | E-mail: save@bt-laboratory.com | www.bt-laboratory.com