

MAP-2 Monoclonal Antibody

Description

Product type	Primary Antibody
Code	BT-MCA0862
Host	Mouse
Isotype	IgG
Size	50ul, 100ul
Immunogen	Purified recombinant human MAP-2 (C-terminus) protein fragments expressed in E.coli.
Mol wt	N/A
Species reactivity	Human,Mouse,Rat,Bovine,Dog
Clonality	Monoclonal
Recommended application	WB
Concentration	1 mg/ml
Full name	Microtubule-associated protein 2
Synonyms	MAP2; Microtubule-associated protein 2; MAP-2

This product is for research use only, not for use in human, therapeutic or diagnostic procedure.

Background

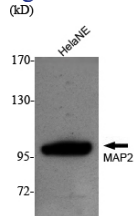
This gene encodes a protein that belongs to the microtubule-associated protein family. The proteins of this family are thought to be involved in microtubule assembly, which is an essential step in neurogenesis. The products of similar genes in rat and mouse are neuron-specific cytoskeletal proteins that are enriched in dendrites, implicating a role in determining and stabilizing dendritic shape during neuron development. A number of alternatively spliced variants encoding distinct isoforms have been described.

Recommended Dilution

WB: 1:1000 - 1:2000

Not yet tested in other applications.

Images



Western Blot analysis using MAP-2 Monoclonal antibody against HeLa nuclear extract.

Storage

-20°C for one year