

MMP-1 Monoclonal Antibody

Description

Product type	Primary Antibody
Code	BT-MCA0889
Host	Mouse
Isotype	IgG
Size	50ul, 100ul
Immunogen	Purified recombinant fragment of human MMP-1 expressed in E. Coli.
Mol wt	N/A
Species reactivity	Human
Clonality	Monoclonal
Recommended application	WB, IHC-p, IF, ICC, FCM, ELISA
Concentration	1 mg/ml
Full name	Interstitial collagenase
Synonyms	MMP1; CLG; Interstitial collagenase; Fibroblast collagenase; Matrix metalloproteinase-1; MMP-1

This product is for research use only, not for use in human, therapeutic or diagnostic procedure.

Background

This gene encodes a member of the peptidase M10 family of matrix metalloproteinases (MMPs). Proteins in this family are involved in the breakdown of extracellular matrix in normal physiological processes, such as embryonic development, reproduction, and tissue remodeling, as well as in disease processes, such as arthritis and metastasis. The encoded preproprotein is proteolytically processed to generate the mature protease. This secreted protease breaks down the interstitial collagens, including types I, II, and III. The gene is part of a cluster of MMP genes on chromosome 11. Mutations in this gene are associated with chronic obstructive pulmonary disease (COPD). Alternative splicing results in multiple transcript variants, at least one of which encodes an isoform that is proteolytically processed.

Recommended Dilution

FC: 1:200 - 1:400

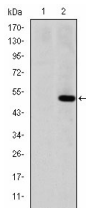
IF: 1:200 - 1:1000

IHC: 1:200 - 1:1000

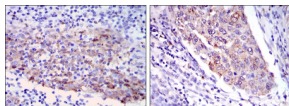
WB: 1:500 - 1:2000

Not yet tested in other applications.

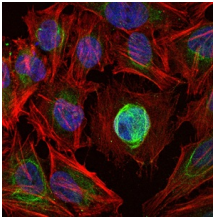
Images



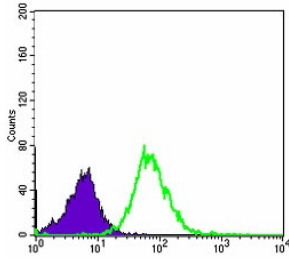
Western Blot analysis using MMP-1 Monoclonal antibody against HEK293 (1) and MMP1-hIgGfc transfected HEK293 (2) cell lysate.



Immunohistochemistry analysis of paraffin-embedded human cervical cancer tissues (left) and human kidney cancer tissues (right) with DAB staining using MMP-1 Monoclonal antibody.



Immunofluorescence analysis of HeLa cells using MMP-1 Monoclonal antibody. Blue: DRAQ5 fluorescent DNA dye. Red: Actin filaments have been labeled with Alexa Fluor-555 phalloidin.



Flow cytometric analysis of HeLa cells using MMP-1 Monoclonal antibody (green) and negative control (purple).

Storage

-20°C for one year

501 Changsheng S Rd, Nanhu Dist, Jiaxing, Zhejiang, China

Tel: 86 21 31007137 | E-mail: save@bt-laboratory.com | www.bt-laboratory.com