

MMP2 mouse Monoclonal Antibody(1H1)

Description

Product type	Primary Antibody
Code	BT-MCA0892
Host	Mouse
Isotype	IgG
Size	20ul, 50ul, 100ul
Immunogen	Synthetic Peptide of MMP2 at AA range of INTERNAL
Mol wt	N/A
Species reactivity	Human,Rat,Mouse
Clonality	Monoclonal
Recommended application	IHC-p, IF
Concentration	1 mg/ml
Full name	MMP2
Synonyms	MMP2

This product is for research use only, not for use in human, therapeutic or diagnostic procedure.

Background

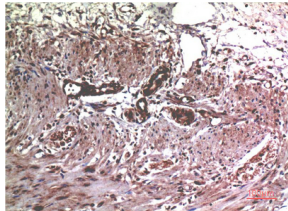
This gene is a member of the matrix metalloproteinase (MMP) gene family, that are zinc-dependent enzymes capable of cleaving components of the extracellular matrix and molecules involved in signal transduction. The protein encoded by this gene is a gelatinase A, type IV collagenase, that contains three fibronectin type II repeats in its catalytic site that allow binding of denatured type IV and V collagen and elastin. Unlike most MMP family members, activation of this protein can occur on the cell membrane. This enzyme can be activated extracellularly by proteases, or, intracellularly by its S-glutathiolation with no requirement for proteolytical removal of the pro-domain. This protein is thought to be involved in multiple pathways including roles in the nervous system, endometrial menstrual breakdown, regulation of vascularization, and metastasis. Mutations in this gene have been associated with Win

Recommended Dilution

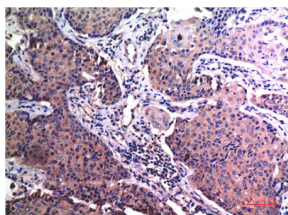
IHC: 1:100-200

Not yet tested in other applications.

Images



Immunohistochemical analysis of paraffin-embedded Human Colon Carcinoma Tissue using MMP2 Mouse Monoclonal antibody diluted at 1:200.



Immunohistochemical analysis of paraffin-embedded Human Breast Carcinoma Tissue using MMP2 Mouse Monoclonal antibody diluted at 1:200.

Storage

-20°C for one year

501 Changsheng S Rd, Nanhu Dist, Jiaxing, Zhejiang, China

Tel: 86 21 31007137 | E-mail: save@bt-laboratory.com | www.bt-laboratory.com