

Msi1 Monoclonal Antibody

Description

Product type	Primary Antibody
Code	BT-MCA0898
Host	Mouse
Isotype	IgG
Size	50ul, 100ul
Immunogen	Purified recombinant fragment of human Msi1 expressed in E. Coli.
Mol wt	N/A
Species reactivity	Human
Clonality	Monoclonal
Recommended application	WB, FCM, ELISA
Concentration	1 mg/ml
Full name	RNA-binding protein Musashi homolog 1
Synonyms	MSI1; RNA-binding protein Musashi homolog 1; Musashi-1

This product is for research use only, not for use in human, therapeutic or diagnostic procedure.

Background

This gene encodes a protein containing two conserved tandem RNA recognition motifs. Similar proteins in other species function as RNA-binding proteins and play central roles in posttranscriptional gene regulation. Expression of this gene has been correlated with the grade of the malignancy and proliferative activity in gliomas and melanomas. A pseudogene for this gene is located on chromosome 11q13.

Recommended Dilution

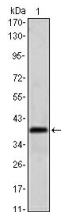
ELISA: 1:10000

FC: 1:200 - 1:400

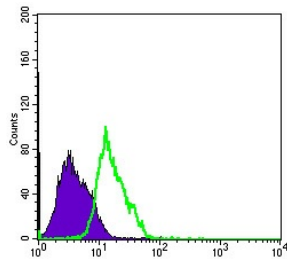
WB: 1:500 - 1:2000

Not yet tested in other applications.

Images



Western Blot analysis using Msi1 Monoclonal antibody against NTERA-2 cell lysate.



Flow cytometric analysis of PC-2 cells using Msi1 Monoclonal antibody (green) and negative control (purple).

Storage

-20°C for one year

501 Changsheng S Rd, Nanhu Dist, Jiaxing, Zhejiang, China

Tel: 86 21 31007137 | E-mail: save@bt-laboratory.com | www.bt-laboratory.com