

MTDH Monoclonal Antibody

Description

Product type	Primary Antibody
Code	BT-MCA0903
Host	Mouse
Isotype	IgG
Size	50ul, 100ul
Immunogen	Purified recombinant fragment of human MTDH expressed in E. Coli.
Mol wt	N/A
Species reactivity	Human
Clonality	Monoclonal
Recommended application	WB, IHC-p, IF, FCM, ELISA
Concentration	1 mg/ml
Full name	Protein LYRIC
Synonyms	MTDH; AEG1; LYRIC; Protein LYRIC; 3D3; LYRIC; Astrocyte elevated gene-1 protein; AEG-1; Lysine-rich CEACAM1 co-isolated protein; Metadherin; Metastasis adhesion protein

This product is for research use only, not for use in human, therapeutic or diagnostic procedure.

Background

Downregulates SLC1A2/EAAT2 promoter activity when expressed ectopically. Activates the nuclear factor kappa-B (NF-kappa-B) transcription factor. Promotes anchorage-independent growth of immortalized melanocytes and astrocytes which is a key component in tumor cell expansion. Promotes lung metastasis and also has an effect on bone and brain metastasis, possibly by enhancing the seeding of tumor cells to the target organ endothelium. Induces chemoresistance.,induction:By TNF-alpha (at protein level). By HIV-1 infection of primary fetal astrocytes.,miscellaneous:Knockdown significantly reduces the adhesion of cancer cells to lung microvascular endothelial cells and the reciprocal effect is observed following overexpression.,subcellular location:In epithelial cells, recruited to tight junctions (TJ) during the maturation of the TJ complexes. A nucleolar staining may be due to nuclear targeting of an isoform lacking the transmembrane domain (By similarity). TNF-alpha causes translocation from the cytoplasm to the nucleus.,subunit:Interacts with BCIPP, CREBBP/CBP and RELA/p65.,tissue specificity:Widely expressed with highest levels in muscle-dominating organs such as skeletal muscle, heart, tongue and small intestine and in endocrine glands such as thyroid and adrenal gland. Overexpressed in various cancers including breast, brain, prostate, melanoma and glioblastoma multiforme.,

Recommended Dilution

ELISA: 1:10000

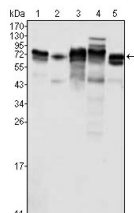
FC: 1:200 - 1:400

IHC: 1:200 - 1:1000

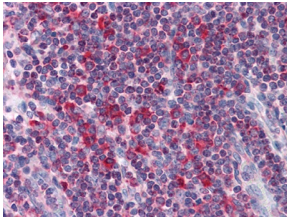
WB: 1:500 - 1:2000

Not yet tested in other applications.

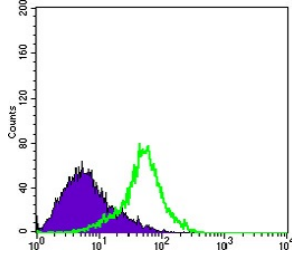
Images



Western Blot analysis using MTDH Monoclonal antibody against K562 (1) SKBR-3 (2) T47D (3) HeLa (4) and MCF-7 (5) cell lysate.



Immunohistochemistry analysis of paraffin-embedded human Liver tissues with AEC staining using MTDH Monoclonal antibody.



Flow cytometric analysis of HeLa cells using MTDH Monoclonal antibody (green) and negative control (purple).

Storage

-20°C for one year

501 Changsheng S Rd, Nanhu Dist, Jiaxing, Zhejiang, China

Tel: 86 21 31007137 | E-mail: save@bt-laboratory.com | www.bt-laboratory.com