

## Muscle actin mouse Monoclonal Antibody(1E9)

### Description

Product type	Primary Antibody
Code	BT-MCA0906
Host	Mouse
Isotype	IgG
Size	20ul, 50ul, 100ul
Immunogen	Synthetic Peptide of Muscle actin
Mol wt	N/A
Species reactivity	Human,Rat,Mouse
Clonality	Monoclonal
Recommended application	IHC-p, IF
Concentration	1 mg/ml
Full name	Muscle actin
Synonyms	0

This product is for research use only, not for use in human, therapeutic or diagnostic procedure.

### Background

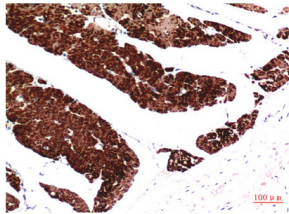
Actin proteins are major components of the eukaryotic cytoskeleton. At least six vertebrate actin isoforms have been identified. The cytoplasmic Beta- and  $\gamma$ -actin proteins are referred to as “non-muscle” actin proteins as they are predominantly expressed in non-muscle cells where they control cell structure and motility. The  $\alpha$ -cardiac and  $\alpha$ -skeletal actin proteins are expressed in striated cardiac and skeletal muscles, respectively. The smooth muscle  $\alpha$ -actin and  $\gamma$ -actin proteins are found primarily in vascular smooth muscle and enteric smooth muscle, respectively. The  $\alpha$ -smooth muscle actin (ACTA2) is also known as aortic smooth muscle actin. These actin isoforms regulate the contractile potential of muscle cells.

### Recommended Dilution

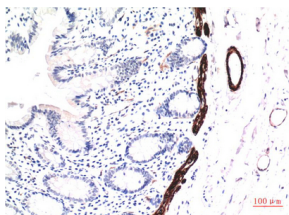
IHC: 1:100-200

Not yet tested in other applications.

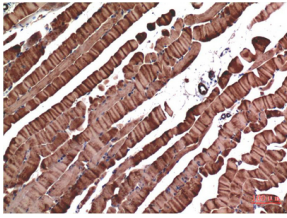
### Images



Immunohistochemical analysis of paraffin-embedded Human Colon Carcinoma Tissue using Muscle Actin Mouse Monoclonal antibody diluted at 1:200.



Immunohistochemical analysis of paraffin-embedded Human Colon Carcinoma Tissue using Muscle Actin Mouse Monoclonal antibody diluted at 1:200.



Immunohistochemical analysis of paraffin-embedded Mouse Skeletal Muscle Tissue using Muscle Actin Mouse Monoclonal antibody diluted at 1:200.

### Storage

-20°C for one year

501 Changsheng S Rd, Nanhu Dist, Jiaxing, Zhejiang, China

Tel: 86 21 31007137 | E-mail: [save@bt-laboratory.com](mailto:save@bt-laboratory.com) | [www.bt-laboratory.com](http://www.bt-laboratory.com)