

## Muscle actin mouse Monoclonal Antibody(3E9)

### Description

Product type	Primary Antibody
Code	BT-MCA0908
Host	Mouse
Isotype	IgG
Size	20ul, 50ul, 100ul
Immunogen	Synthetic Peptide of Muscle actin
Mol wt	N/A
Species reactivity	Human,Rat,Mouse
Clonality	Monoclonal
Recommended application	WB, IHC-p, IF
Concentration	1 mg/ml
Full name	ACTA1
Synonyms	ACTA1

This product is for research use only, not for use in human, therapeutic or diagnostic procedure.

### Background

The product encoded by this gene belongs to the actin family of proteins, which are highly conserved proteins that play a role in cell motility, structure and integrity. Alpha, beta and gamma actin isoforms have been identified, with alpha actins being a major constituent of the contractile apparatus, while beta and gamma actins are involved in the regulation of cell motility. This actin is an alpha actin that is found in skeletal muscle. Mutations in this gene cause nemaline myopathy type 3, congenital myopathy with excess of thin myofilaments, congenital myopathy with cores, and congenital myopathy with fiber-type disproportion, diseases that lead to muscle fiber defects.

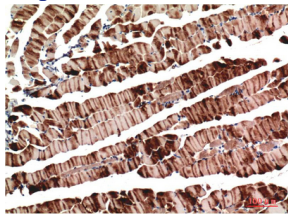
### Recommended Dilution

IHC: 1:100-200

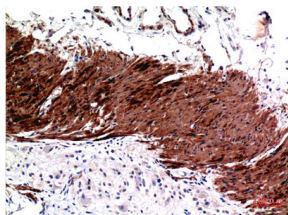
WB: 1:1000-2000

Not yet tested in other applications.

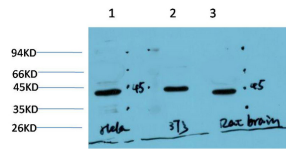
### Images



Immunohistochemical analysis of paraffin-embedded Mouse Skeletal Muscle Tissue using Muscle Actin Mouse Monoclonal antibody diluted at 1:200.



Immunohistochemical analysis of paraffin-embedded Human Colon Carcinoma Tissue using Muscle Actin Mouse Monoclonal antibody diluted at 1:200.



Western blot analysis of 1) HeLa Cell Lysate, 2) 3T3 Cell Lysate, 3) Rat Brain Tissue Lysate using Muscle Actin Mouse Monoclonal antibody diluted at 1:1000.

### Storage

-20°C for one year

501 Changsheng S Rd, Nanhu Dist, Jiaxing, Zhejiang, China

Tel: 86 21 31007137 | E-mail: [save@bt-laboratory.com](mailto:save@bt-laboratory.com) | [www.bt-laboratory.com](http://www.bt-laboratory.com)