

## MYL2 Monoclonal Antibody

### Description

<b>Product type</b>	Primary Antibody
<b>Code</b>	BT-MCA0925
<b>Host</b>	Mouse
<b>Isotype</b>	IgG
<b>Size</b>	50ul, 100ul
<b>Immunogen</b>	Purified recombinant fragment of MYL2 expressed in E. Coli.
<b>Mol wt</b>	N/A
<b>Species reactivity</b>	Human
<b>Clonality</b>	Monoclonal
<b>Recommended application</b>	WB, ELISA
<b>Concentration</b>	1 mg/ml
<b>Full name</b>	Myosin regulatory light chain 2, ventricular,cardiac muscle isoform
<b>Synonyms</b>	MYL2; Myosin regulatory light chain 2; ventricular; cardiac muscle isoform; MLC-2; MLC-2v

**This product is for research use only, not for use in human, therapeutic or diagnostic procedure.**

### Background

Thus gene encodes the regulatory light chain associated with cardiac myosin beta (or slow) heavy chain. Ca<sup>+</sup> triggers the phosphorylation of regulatory light chain that in turn triggers contraction. Mutations in this gene are associated with mid-left ventricular chamber type hypertrophic cardiomyopathy.

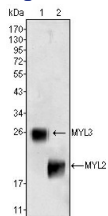
### Recommended Dilution

ELISA: 1:10000

WB: 1:500 - 1:2000

Not yet tested in other applications.

### Images



Western Blot analysis using MYL2 Monoclonal antibody against rat fetal heart tissue lysate.

### Storage

-20°C for one year

501 Changsheng S Rd, Nanhu Dist, Jiaxing, Zhejiang, China

Tel: 86 21 31007137 | E-mail: [save@bt-laboratory.com](mailto:save@bt-laboratory.com) | [www.bt-laboratory.com](http://www.bt-laboratory.com)