

MYL3 Monoclonal Antibody

Description

Product type	Primary Antibody
Code	BT-MCA0926
Host	Mouse
Isotype	IgG
Size	50ul, 100ul
Immunogen	Purified recombinant fragment of MYL3 expressed in E. Coli.
Mol wt	N/A
Species reactivity	Human
Clonality	Monoclonal
Recommended application	WB, IHC-p, IF, ELISA
Concentration	1 mg/ml
Full name	Myosin light chain 3
Synonyms	MYL3; Myosin light chain 3; Cardiac myosin light chain 1; CMLC1; Myosin light chain 1; slow-twitch muscle B; ventricular isoform; MLC1SB; Ventricular; slow twitch myosin alkali light chain

This product is for research use only, not for use in human, therapeutic or diagnostic procedure.

Background

MYL3 encodes myosin light chain 3, an alkali light chain also referred to in the literature as both the ventricular isoform and the slow skeletal muscle isoform. Mutations in MYL3 have been identified as a cause of mid-left ventricular chamber type hypertrophic cardiomyopathy.

Recommended Dilution

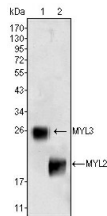
ELISA: 1:10000

IHC: 1:200 - 1:1000

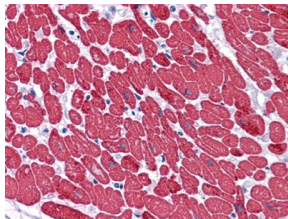
WB: 1:500 - 1:2000

Not yet tested in other applications.

Images



Western Blot analysis using MYL3 Monoclonal antibody against rat fetal heart tissues lysate.



Immunohistochemistry analysis of paraffin-embedded human Heart tissues with AEC staining using MYL3 Monoclonal antibody.

Storage

-20°C for one year

501 Changsheng S Rd, Nanhu Dist, Jiaxing, Zhejiang, China

Tel: 86 21 31007137 | E-mail: save@bt-laboratory.com | www.bt-laboratory.com