

## NBR1 mouse Monoclonal Antibody(7C3)

### Description

<b>Product type</b>	Primary Antibody
<b>Code</b>	BT-MCA0937
<b>Host</b>	Mouse
<b>Isotype</b>	IgG
<b>Size</b>	20ul, 50ul, 100ul
<b>Immunogen</b>	Recombinant Protein of NBR1
<b>Mol wt</b>	N/A
<b>Species reactivity</b>	Human,Mouse,Rat
<b>Clonality</b>	Monoclonal
<b>Recommended application</b>	IF, ICC, IHC-p
<b>Concentration</b>	1 mg/ml
<b>Full name</b>	Next to BRCA1 gene 1 protein
<b>Synonyms</b>	Next to BRCA1 gene 1 protein; Cell migration-inducing gene 19 protein; Membrane component chromosome 17 surface marker 2; Neighbor of BRCA1 gene 1 protein; Protein 1A1-3B

**This product is for research use only, not for use in human, therapeutic or diagnostic procedure.**

### Background

The protein encoded by this gene was originally identified as an ovarian tumor antigen monitored in ovarian cancer. The encoded protein contains a B-box/coiled-coil motif, which is present in many genes with transformation potential. It functions as a specific autophagy receptor for the selective autophagic degradation of peroxisomes by forming intracellular inclusions with ubiquitylated autophagic substrates. This gene is located on a region of chromosome 17q21.1 that is in close proximity to the BRCA1 tumor suppressor gene. Alternative splicing of this gene results in multiple transcript variants.

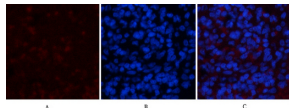
### Recommended Dilution

IF: 1:50-200

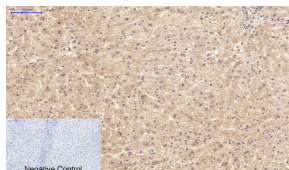
IHC-p: 1:50-300

Not yet tested in other applications.

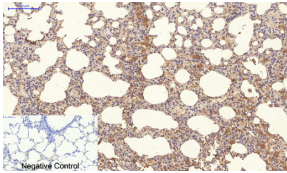
### Images



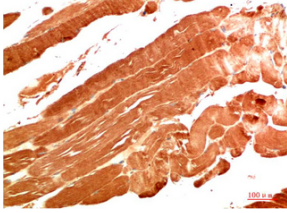
Immunofluorescence analysis of rat-spleen tissue. 1.NBR1 Mouse Monoclonal antibody(7C3)(red) was diluted at 1:200(4°C,overnight). 2. Cy3 labeled Secondary antibody was diluted at 1:300(room temperature, 50min).3. Picture B: DAPI(blue) 10min. Picture A:Target. Picture B: DAPI. Picture C: merge of A+B



Immunohistochemical analysis of paraffin-embedded Human-liver tissue. 1.NBR1 Mouse Monoclonal antibody(7C3) was diluted at 1:200(4°C,overnight). 2.Sodium citrate pH 6.0 was used for antibody retrieval(>98°C,20min). 3.Secondary antibody was diluted at 1:200(room temperature, 30min). Negative control was used by secondary antibody only.



Immunohistochemical analysis of paraffin-embedded Rat-lung tissue. 1.NBR1 Mouse Monoclonal antibody(7C3) was diluted at 1:200(4°C,overnight). 2.Sodium citrate pH 6.0 was used for antibody retrieval(>98°C,20min). 3.Secondary antibody was diluted at 1:200(room temperature, 30min). Negative control was used by secondary antibody only.



Immunohistochemical analysis of paraffin-embedded Human Skeletal Muscle Tissue using NBR1 Mouse Monoclonal antibody diluted at 1:200.

### Storage

-20°C for one year

501 Changsheng S Rd, Nanhu Dist, Jiaxing, Zhejiang, China

Tel: 86 21 31007137 | E-mail: [save@bt-laboratory.com](mailto:save@bt-laboratory.com) | [www.bt-laboratory.com](http://www.bt-laboratory.com)