

NCAM-L1 Monoclonal Antibody

Description

| | |
|--------------------------------|---|
| Product type | Primary Antibody |
| Code | BT-MCA0938 |
| Host | Mouse |
| Isotype | IgG |
| Size | 50ul, 100ul |
| Immunogen | Purified recombinant human NCAM-L1 (N-terminus) protein fragments expressed in E.coli. |
| Mol wt | N/A |
| Species reactivity | Human,Mouse,Rat,Dog,Rabbit |
| Clonality | Monoclonal |
| Recommended application | WB |
| Concentration | 1 mg/ml |
| Full name | Neural cell adhesion molecule L1 |
| Synonyms | L1CAM; CAML1; MIC5; Neural cell adhesion molecule L1; N-CAM-L1; NCAM-L1; CD antigen CD171 |

This product is for research use only, not for use in human, therapeutic or diagnostic procedure.

Background

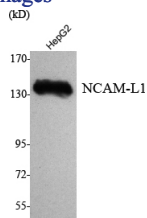
The protein encoded by this gene is an axonal glycoprotein belonging to the immunoglobulin supergene family. The ectodomain, consisting of several immunoglobulin-like domains and fibronectin-like repeats (type III), is linked via a single transmembrane sequence to a conserved cytoplasmic domain. This cell adhesion molecule plays an important role in nervous system development, including neuronal migration and differentiation. Mutations in the gene cause X-linked neurological syndromes known as CRASH (corpus callosum hypoplasia, retardation, aphasia, spastic paraplegia and hydrocephalus). Alternative splicing of this gene results in multiple transcript variants, some of which include an alternate exon that is considered to be specific to neurons.

Recommended Dilution

WB: 1:1000 - 1:2000

Not yet tested in other applications.

Images



Western Blot analysis using NCAM-L1 Monoclonal antibody against HepG2 cell lysate.

Storage

-20°C for one year