

## OLIG2 Monoclonal Antibody

### Description

<b>Product type</b>	Primary Antibody
<b>Code</b>	BT-MCA0959
<b>Host</b>	Mouse
<b>Isotype</b>	IgG
<b>Size</b>	50ul, 100ul
<b>Immunogen</b>	Purified recombinant fragment of human OLIG2 expressed in E. Coli.
<b>Mol wt</b>	N/A
<b>Species reactivity</b>	Human
<b>Clonality</b>	Monoclonal
<b>Recommended application</b>	WB, IHC-p, IF, ICC, ELISA
<b>Concentration</b>	1 mg/ml
<b>Full name</b>	Oligodendrocyte transcription factor 2
<b>Synonyms</b>	OLIG2; BHLHB1; BHLHE19; PRKCBP2; RACK17; Oligodendrocyte transcription factor 2; Oligo2; Class B basic helix-loop-helix protein 1; bHLHb1; Class E basic helix-loop-helix protein 19; bHLHe19; Protein kinase C-binding protein 2; Protein kinas

**This product is for research use only, not for use in human, therapeutic or diagnostic procedure.**

### Background

This gene encodes a basic helix-loop-helix transcription factor which is expressed in oligodendroglial tumors of the brain. The protein is an essential regulator of ventral neuroectodermal progenitor cell fate. The gene is involved in a chromosomal translocation t(14|21)(q11.2|q22) associated with T-cell acute lymphoblastic leukemia. Its chromosomal location is within a region of chromosome 21 which has been suggested to play a role in learning deficits associated with Down syndrome.

### Recommended Dilution

ELISA: 1:10000

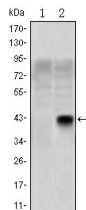
IF: 1:200 - 1:1000

IHC: 1:200 - 1:1000

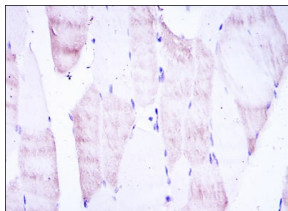
WB: 1:500 - 1:2000

Not yet tested in other applications.

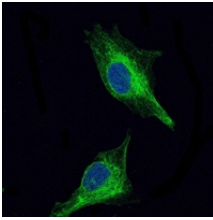
### Images



Western Blot analysis using OLIG2 Monoclonal antibody against HEK293 (1) and OLIG2-hlgGfc transfected HEK293 (2) cell lysate.



Immunohistochemistry analysis of paraffin-embedded muscle tissues with DAB staining using OLIG2 Monoclonal antibody.



Immunofluorescence analysis of U251 cells using OLIG2 Monoclonal antibody (green). Blue: DRAQ5 fluorescent DNA dye.

### Storage

-20°C for one year

501 Changsheng S Rd, Nanhu Dist, Jiaxing, Zhejiang, China

Tel: 86 21 31007137 | E-mail: [save@bt-laboratory.com](mailto:save@bt-laboratory.com) | [www.bt-laboratory.com](http://www.bt-laboratory.com)