

## p38Beta Monoclonal Antibody

### Description

<b>Product type</b>	Primary Antibody
<b>Code</b>	BT-MCA0972
<b>Host</b>	Mouse
<b>Isotype</b>	IgG
<b>Size</b>	50ul, 100ul
<b>Immunogen</b>	Purified recombinant fragment of p38Beta (aa251-363) expressed in E. Coli.
<b>Mol wt</b>	N/A
<b>Species reactivity</b>	Human
<b>Clonality</b>	Monoclonal
<b>Recommended application</b>	WB, ELISA
<b>Concentration</b>	1 mg/ml
<b>Full name</b>	Mitogen-activated protein kinase 11
<b>Synonyms</b>	MAPK11; PRKM11; SAPK2; SAPK2B; Mitogen-activated protein kinase 11; MAP kinase 11; MAPK 11; Mitogen-activated protein kinase p38 beta; MAP kinase p38 beta; p38b; Stress-activated protein kinase 2b; SAPK2b; p38-2

This product is for research use only, not for use in human, therapeutic or diagnostic procedure.

### Background

This gene encodes a member of a family of protein kinases that are involved in the integration of biochemical signals for a wide variety of cellular processes, including cell proliferation, differentiation, transcriptional regulation, and development. The encoded protein can be activated by proinflammatory cytokines and environmental stresses through phosphorylation by mitogen activated protein kinase kinases (MKKs). Alternative splicing results in multiple transcript variants.

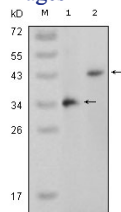
### Recommended Dilution

ELISA: 1:10000

WB: 1:500 - 1:2000

Not yet tested in other applications.

### Images



Western Blot analysis using p38Beta Monoclonal antibody against truncated p38Beta recombinant protein (1) and full-length p38Beta (aa1-363)-pcDNA3.1 transfected CHO-K1 cell lysate (2).

### Storage

-20°C for one year