

## PAK Gamma Monoclonal Antibody

### Description

<b>Product type</b>	Primary Antibody
<b>Code</b>	BT-MCA0984
<b>Host</b>	Mouse
<b>Isotype</b>	IgG
<b>Size</b>	50ul, 100ul
<b>Immunogen</b>	Purified recombinant fragment of PAK $\gamma$ expressed in E. Coli.
<b>Mol wt</b>	N/A
<b>Species reactivity</b>	Human,Monkey
<b>Clonality</b>	Monoclonal
<b>Recommended application</b>	WB, IHC-p, IF, ICC, ELISA
<b>Concentration</b>	1 mg/ml
<b>Full name</b>	Serine,threonine-protein kinase PAK 2
<b>Synonyms</b>	PAK2; Serine; threonine-protein kinase PAK 2; Gamma-PAK; PAK65; S6; H4 kinase; p21-activated kinase 2; PAK-2; p58

This product is for research use only, not for use in human, therapeutic or diagnostic procedure.

### Background

The p21 activated kinases (PAK) are critical effectors that link Rho GTPases to cytoskeleton reorganization and nuclear signaling. The PAK proteins are a family of serine/threonine kinases that serve as targets for the small GTP binding proteins, CDC42 and RAC1, and have been implicated in a wide range of biological activities. The protein encoded by this gene is activated by proteolytic cleavage during caspase-mediated apoptosis, and may play a role in regulating the apoptotic events in the dying cell.

### Recommended Dilution

ELISA: 1:10000

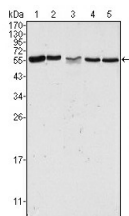
IF: 1:200 - 1:1000

IHC: 1:200 - 1:1000

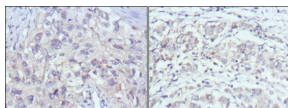
WB: 1:500 - 1:2000

Not yet tested in other applications.

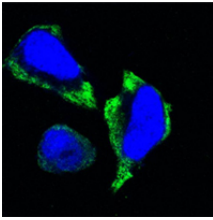
### Images



Western Blot analysis using PAKGamma Monoclonal antibody against HeLa (1) Jurkat (2) A549 (3) HEK293 (4) and K562 (5) cell lysate.



Immunohistochemistry analysis of paraffin-embedded human lung cancer (left) and gastric cancer (right) with DAB staining using PAKGamma Monoclonal antibody.



Confocal immunofluorescence analysis of HeLa cells using PAKGamma Monoclonal antibody (green). Blue: DRAQ5 fluorescent DNA dye.

#### Storage

-20°C for one year

501 Changsheng S Rd, Nanhu Dist, Jiaxing, Zhejiang, China

Tel: 86 21 31007137 | E-mail: [save@bt-laboratory.com](mailto:save@bt-laboratory.com) | [www.bt-laboratory.com](http://www.bt-laboratory.com)