

## PBEF Monoclonal Antibody

### Description

<b>Product type</b>	Primary Antibody
<b>Code</b>	BT-MCA0995
<b>Host</b>	Mouse
<b>Isotype</b>	IgG
<b>Size</b>	50ul, 100ul
<b>Immunogen</b>	Purified recombinant fragment of PBEF (aa338-479) expressed in E. Coli.
<b>Mol wt</b>	N/A
<b>Species reactivity</b>	Human
<b>Clonality</b>	Monoclonal
<b>Recommended application</b>	WB, ELISA
<b>Concentration</b>	1 mg/ml
<b>Full name</b>	Nicotinamide phosphoribosyltransferase
<b>Synonyms</b>	NAMPT; PBEF; PBEF1; Nicotinamide phosphoribosyltransferase; NAmPRTase; Nampt; Pre-B-cell colony-enhancing factor 1; Pre-B cell-enhancing factor; Visfatin

This product is for research use only, not for use in human, therapeutic or diagnostic procedure.

### Background

This gene encodes a protein that catalyzes the condensation of nicotinamide with 5-phosphoribosyl-1-pyrophosphate to yield nicotinamide mononucleotide, one step in the biosynthesis of nicotinamide adenine dinucleotide. The protein belongs to the nicotinic acid phosphoribosyltransferase (NAPRTase) family and is thought to be involved in many important biological processes, including metabolism, stress response and aging. This gene has a pseudogene on chromosome 10.

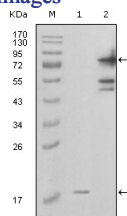
### Recommended Dilution

ELISA: 1:10000

WB: 1:500 - 1:2000

Not yet tested in other applications.

### Images



Western Blot analysis using PBEF Monoclonal antibody against truncated PBEF1-His recombinant protein (1) and full-length GFP-PBEF1(aa1-491) transfected COS7 cell lysate (2).

### Storage

-20°C for one year