

## PDGFR Alpha mouse Monoclonal Antibody(7A3)

### Description

<b>Product type</b>	Primary Antibody
<b>Code</b>	BT-MCA1011
<b>Host</b>	Mouse
<b>Isotype</b>	IgG
<b>Size</b>	20ul, 50ul, 100ul
<b>Immunogen</b>	Synthetic Peptide of PDGFR $\alpha$ at AA range of 1010-1090
<b>Mol wt</b>	N/A
<b>Species reactivity</b>	Human,Rat,Mouse
<b>Clonality</b>	Monoclonal
<b>Recommended application</b>	IF, ICC, IHC-p
<b>Concentration</b>	1 mg/ml
<b>Full name</b>	PDGFRA
<b>Synonyms</b>	PDGFRA

This product is for research use only, not for use in human, therapeutic or diagnostic procedure.

### Background

This gene encodes a cell surface tyrosine kinase receptor for members of the platelet-derived growth factor family. These growth factors are mitogens for cells of mesenchymal origin. The identity of the growth factor bound to a receptor monomer determines whether the functional receptor is a homodimer or a heterodimer, composed of both platelet-derived growth factor receptor alpha and beta polypeptides. Studies suggest that this gene plays a role in organ development, wound healing, and tumor progression. Mutations in this gene have been associated with idiopathic hypereosinophilic syndrome, somatic and familial gastrointestinal stromal tumors, and a variety of other cancers.

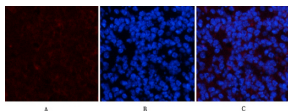
### Recommended Dilution

IF: 1:50-200

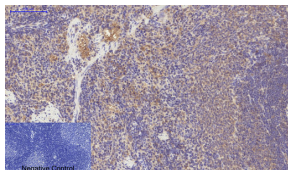
IHC: 1:100-200

Not yet tested in other applications.

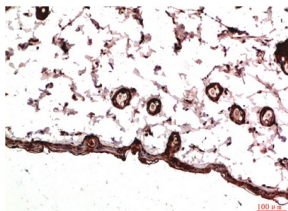
### Images



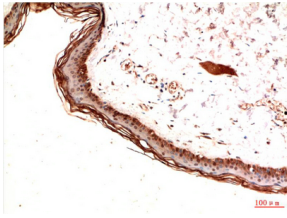
Immunofluorescence analysis of mouse-spleen tissue. 1.PDGFRAlpha Mouse Monoclonal antibody(7A3)(red) was diluted at 1:200(4°C,overnight). 2. Cy3 labeled Secondary antibody was diluted at 1:300(room temperature, 50min).3. Picture B: DAPI(blue) 10min. Picture A:Target. Picture B: DAPI. Picture C: merge of A+B



Immunohistochemical analysis of paraffin-embedded Rat-spleen tissue. 1.PDGFRAlpha Mouse Monoclonal antibody(7A3) was diluted at 1:200(4°C,overnight). 2.Sodium citrate pH 6.0 was used for antibody retrieval(>98°C,20min). 3.Secondary antibody was diluted at 1:200(room temperature, 30min). Negative control was used by secondary antibody only.



Immunohistochemical analysis of paraffin-embedded Rat Skin Tissue using PDGFR alpha Mouse Monoclonal antibody diluted at 1:200.



Immunohistochemical analysis of paraffin-embedded Human Skin Tissue using PDGFR a Mouse Monoclonal antibody diluted at 1:200.

### Storage

-20°C for one year

501 Changsheng S Rd, Nanhu Dist, Jiaxing, Zhejiang, China

Tel: 86 21 31007137 | E-mail: [save@bt-laboratory.com](mailto:save@bt-laboratory.com) | [www.bt-laboratory.com](http://www.bt-laboratory.com)