

## PEG10 Monoclonal Antibody

### Description

<b>Product type</b>	Primary Antibody
<b>Code</b>	BT-MCA1016
<b>Host</b>	Mouse
<b>Isotype</b>	IgG
<b>Size</b>	50ul, 100ul
<b>Immunogen</b>	Purified recombinant fragment of human PEG10 expressed in E. Coli.
<b>Mol wt</b>	N/A
<b>Species reactivity</b>	Human
<b>Clonality</b>	Monoclonal
<b>Recommended application</b>	WB, IHC-p, IF, ELISA
<b>Concentration</b>	1 mg/ml
<b>Full name</b>	Retrotransposon-derived protein PEG10
<b>Synonyms</b>	PEG10; EDR; KIAA1051; MAR2; MART2; MEF3L1; RGAG3; Retrotransposon-derived protein PEG10; Embryonal carcinoma differentiation-regulated protein; Mammalian retrotransposon-derived protein 2; Myelin expression factor 3-like protein 1; MEF3-lik

**This product is for research use only, not for use in human, therapeutic or diagnostic procedure.**

### Background

This is a paternally expressed imprinted gene that is thought to have been derived from the Ty3/Gypsy family of retrotransposons. It contains two overlapping open reading frames, RF1 and RF2, and expresses two proteins: a shorter, gag-like protein (with a CCHC-type zinc finger domain) from RF1 and a longer, gag/pol-like fusion protein (with an additional aspartic protease motif) from RF1/RF2 by -1 translational frameshifting (-1 FS). While -1 FS has been observed in RNA viruses and transposons in both prokaryotes and eukaryotes, this gene represents the first example of -1 FS in a eukaryotic cellular gene. This gene is highly conserved across mammalian species and retains the heptanucleotide (GGGAAAC) and pseudoknot elements required for -1 FS. It is expressed in adult and embryonic tissues (most notably in placenta) and reported to have a role in cell proliferation, differentiation and apoptosis.

### Recommended Dilution

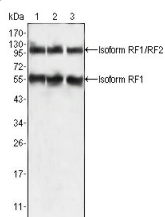
ELISA: 1:10000

IHC: 1:200 - 1:1000

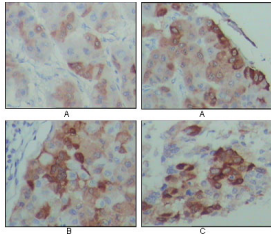
WB: 1:500 - 1:2000

Not yet tested in other applications.

### Images



Western Blot analysis using PEG10 Monoclonal antibody against HepG2 (1) SMMC-7721 (2) and A549 (3) cell lysate.



Immunohistochemistry analysis of paraffin-embedded human hepatocarcinoma (A), breast carcinoma (B) and lung cancer tissues (C), showing cytoplasmic localization with DAB staining using PEG10 Monoclonal antibody.

### Storage

-20°C for one year

501 Changsheng S Rd, Nanhu Dist, Jiaxing, Zhejiang, China

Tel: 86 21 31007137 | E-mail: [save@bt-laboratory.com](mailto:save@bt-laboratory.com) | [www.bt-laboratory.com](http://www.bt-laboratory.com)