

Pirh2 Monoclonal Antibody

Description

Product type	Primary Antibody
Code	BT-MCA1034
Host	Mouse
Isotype	IgG
Size	50ul, 100ul
Immunogen	Purified recombinant fragment of human Pirh2 expressed in E. Coli.
Mol wt	N/A
Species reactivity	Human,Rat
Clonality	Monoclonal
Recommended application	WB, IHC-p, IF, ICC, FCM, ELISA
Concentration	1 mg/ml
Full name	RING finger and CHY zinc finger domain-containing protein 1
Synonyms	RCHY1; ARNIP; CHIMP; PIRH2; RNF199; ZNF363; RING finger and CHY zinc finger domain-containing protein 1; Androgen receptor N-terminal-interacting protein; CH-rich-interacting match with PLAG1; E3 ubiquitin-protein ligase Pirh2; RING finger

This product is for research use only, not for use in human, therapeutic or diagnostic procedure.

Background

The protein encoded by this gene has ubiquitin ligase activity. It mediates E3-dependent ubiquitination and proteasomal degradation of target proteins, including tumor protein 53, histone deacetylase 1, and cyclin-dependent kinase inhibitor 1B, thus regulating their levels and cell cycle progression. Alternatively spliced transcript variants encoding different isoforms have been described for this gene.

Recommended Dilution

FC: 1:200 - 1:400

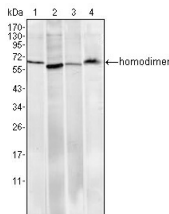
IF: 1:200 - 1:1000

IHC: 1:200 - 1:1000

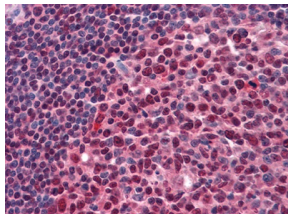
WB: 1:500 - 1:2000

Not yet tested in other applications.

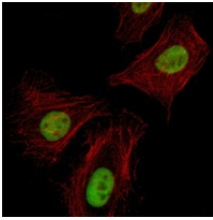
Images



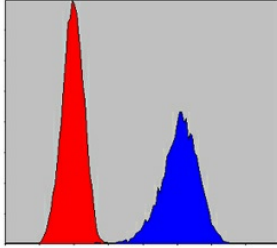
Western Blot analysis using Pirh2 Monoclonal antibody against HeLa (1) A549 (2) MCF-7 (3) and PC-12 (4) cell lysate.



Immunohistochemistry analysis of paraffin-embedded human Tonsil tissues with AEC staining using Pirh2 Monoclonal antibody.



Immunofluorescence analysis of HeLa cells using Pirh2 Monoclonal antibody (green). Red: Actin filaments have been labeled with Alexa Fluor-555 phalloidin.



Flow cytometric analysis of PC-12 cells using Pirh2 Monoclonal antibody (blue) and negative control (red).

Storage

-20°C for one year

501 Changsheng S Rd, Nanhu Dist, Jiaxing, Zhejiang, China

Tel: 86 21 31007137 | E-mail: save@bt-laboratory.com | www.bt-laboratory.com