

PLAP Monoclonal Antibody

Description

Product type	Primary Antibody
Code	BT-MCA1039
Host	Mouse
Isotype	IgG
Size	50ul, 100ul
Immunogen	Purified recombinant fragment of human PLAP expressed in E. Coli.
Mol wt	N/A
Species reactivity	Human
Clonality	Monoclonal
Recommended application	WB, IHC-p, IF, ELISA
Concentration	1 mg/ml
Full name	Alkaline phosphatase, placental type
Synonyms	ALPP; PLAP; Alkaline phosphatase; placental type; Alkaline phosphatase Regan isozyme; Placental alkaline phosphatase 1; PLAP-1

This product is for research use only, not for use in human, therapeutic or diagnostic procedure.

Background

The protein encoded by this gene is an alkaline phosphatase, a metalloenzyme that catalyzes the hydrolysis of phosphoric acid monoesters. It belongs to a multigene family composed of four alkaline phosphatase isoenzymes. The enzyme functions as a homodimer and has a catalytic site containing one magnesium and two zinc ions, which are required for its enzymatic function. The protein is primarily expressed in placental and endometrial tissue| however, strong ectopic expression has been detected in ovarian adenocarcinoma, serous cystadenocarcinoma, and other ovarian cancer cells.

Recommended Dilution

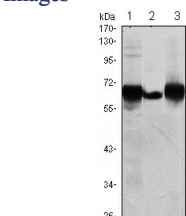
ELISA: 1:10000

IHC: 1:200 - 1:1000

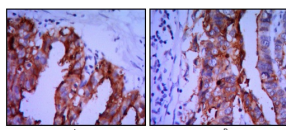
WB: 1:500 - 1:2000

Not yet tested in other applications.

Images



Western Blot analysis using PLAP Monoclonal antibody against HepG2 (1) A431 (2) and MCF-7 (3) cell lysate.



Immunohistochemistry analysis of paraffin-embedded ovarian cancer (A), stomach cancer (B) with DAB staining using PLAP Monoclonal antibody.

Storage

-20°C for one year

501 Changsheng S Rd, Nanhu Dist, Jiaxing, Zhejiang, China

Tel: 86 21 31007137 | E-mail: save@bt-laboratory.com | www.bt-laboratory.com