

PMR1 Monoclonal Antibody

Description

Product type	Primary Antibody
Code	BT-MCA1041
Host	Mouse
Isotype	IgG
Size	50ul, 100ul
Immunogen	Purified recombinant fragment of PMR1 expressed in E. Coli.
Mol wt	N/A
Species reactivity	Human,Monkey
Clonality	Monoclonal
Recommended application	WB, IHC-p, IF, ELISA
Concentration	1 mg/ml
Full name	Calcium-transporting ATPase type 2C member 1
Synonyms	ATP2C1; KIAA1347; PMR1L; HUSSY-28; Calcium-transporting ATPase type 2C member 1; ATPase 2C1; ATP-dependent Ca(2+) pump PMR1

This product is for research use only, not for use in human, therapeutic or diagnostic procedure.

Background

The protein encoded by this gene belongs to the family of P-type cation transport ATPases. This magnesium-dependent enzyme catalyzes the hydrolysis of ATP coupled with the transport of calcium ions. Defects in this gene cause Hailey-Hailey disease, an autosomal dominant disorder. Alternatively spliced transcript variants encoding different isoforms have been identified.

Recommended Dilution

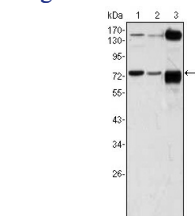
ELISA: 1:10000

IHC: 1:200 - 1:1000

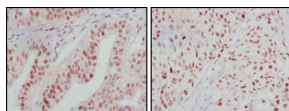
WB: 1:500 - 1:2000

Not yet tested in other applications.

Images



Western Blot analysis using PMR1 Monoclonal antibody against A431 (1) HeLa (2) and HEK293 (3) cell lysate.



Immunohistochemistry analysis of paraffin-embedded human ovarian cancer (left) and breast cancer (right) tissues with DAB staining using PMR1 Monoclonal antibody.

Storage

-20°C for one year

