

Podocalyxin-like 1 Monoclonal Antibody

Description

Product type	Primary Antibody
Code	BT-MCA1042
Host	Mouse
Isotype	IgG
Size	50ul, 100ul
Immunogen	Purified recombinant fragment of human Podocalyxin-like 1 expressed in E. Coli.
Mol wt	N/A
Species reactivity	Human
Clonality	Monoclonal
Recommended application	WB, IHC-p, IF, FCM, ELISA
Concentration	1 mg/ml
Full name	Podocalyxin
Synonyms	PODXL; PCLP; PCLP1; Podocalyxin; GCTM-2 antigen; Gp200; Podocalyxin-like protein 1; PC; PCLP-1

This product is for research use only, not for use in human, therapeutic or diagnostic procedure.

Background

This gene encodes a member of the sialomucin protein family. The encoded protein was originally identified as an important component of glomerular podocytes. Podocytes are highly differentiated epithelial cells with interdigitating foot processes covering the outer aspect of the glomerular basement membrane. Other biological activities of the encoded protein include: binding in a membrane protein complex with Na⁺/H⁺ exchanger regulatory factor to intracellular cytoskeletal elements, playing a role in hematopoietic cell differentiation, and being expressed in vascular endothelium cells and binding to L-selectin.

Recommended Dilution

ELISA: 1:10000

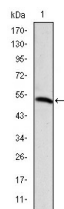
FC: 1:200 - 1:400

IHC: 1:200 - 1:1000

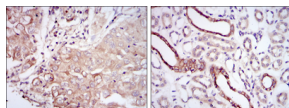
WB: 1:500 - 1:2000

Not yet tested in other applications.

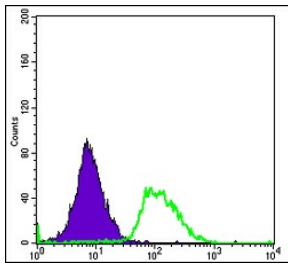
Images



Western Blot analysis using Podocalyxin-like 1 Monoclonal antibody against recombinant protein.



Immunohistochemistry analysis of paraffin-embedded lung cancer tissues (left) and kidney tissues (right) with DAB staining using Podocalyxin-like 1 Monoclonal antibody.



Flow cytometric analysis of HeLa cells using Podocalyxin-like 1 Monoclonal antibody (green) and negative control (purple).

Storage

-20°C for one year

501 Changsheng S Rd, Nanhu Dist, Jiaxing, Zhejiang, China

Tel: 86 21 31007137 | E-mail: save@bt-laboratory.com | www.bt-laboratory.com