

PP1 Alpha Monoclonal Antibody

Description

Product type	Primary Antibody
Code	BT-MCA1046
Host	Mouse
Isotype	IgG
Size	50ul, 100ul
Immunogen	Purified recombinant fragment of human PP1 α expressed in E. Coli.
Mol wt	N/A
Species reactivity	Human, Mouse
Clonality	Monoclonal
Recommended application	WB, ELISA
Concentration	1 mg/ml
Full name	Serine, threonine-protein phosphatase PP1-alpha catalytic subunit
Synonyms	PPP1CA; PPP1A; Serine; threonine-protein phosphatase PP1-alpha catalytic subunit; PP-1A

This product is for research use only, not for use in human, therapeutic or diagnostic procedure.

Background

The protein encoded by this gene is one of the three catalytic subunits of protein phosphatase 1 (PP1). PP1 is a serine/threonine specific protein phosphatase known to be involved in the regulation of a variety of cellular processes, such as cell division, glycogen metabolism, muscle contractility, protein synthesis, and HIV-1 viral transcription. Increased PP1 activity has been observed in the end stage of heart failure. Studies in both human and mice suggest that PP1 is an important regulator of cardiac function. Mouse studies also suggest that PP1 functions as a suppressor of learning and memory. Three alternatively spliced transcript variants encoding different isoforms have been found for this gene.

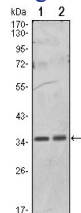
Recommended Dilution

ELISA: 1:10000

WB: 1:500 - 1:2000

Not yet tested in other applications.

Images



Western Blot analysis using PP1Alpha Monoclonal antibody against HeLa (1) and NIH/3T3 (2) cell lysate.

Storage

-20°C for one year