

PP2A-C Alpha Monoclonal Antibody

Description

Product type	Primary Antibody
Code	BT-MCA1048
Host	Mouse
Isotype	IgG
Size	50ul, 100ul
Immunogen	Purified recombinant human PP2A-C α (N-terminus) protein fragments expressed in E.coli.
Mol wt	N/A
Species reactivity	Human,Mouse,Bovine,Chicken,Dog,Pig,Rabbit,Zebrafish
Clonality	Monoclonal
Recommended application	WB, IF, ICC
Concentration	1 mg/ml
Full name	Serine,threonine-protein phosphatase 2A catalytic subunit alpha isoform
Synonyms	PPP2CA; Serine; threonine-protein phosphatase 2A catalytic subunit alpha isoform; PP2A-alpha; Replication protein C; RP-C

This product is for research use only, not for use in human, therapeutic or diagnostic procedure.

Background

This gene encodes the phosphatase 2A catalytic subunit. Protein phosphatase 2A is one of the four major Ser/Thr phosphatases, and it is implicated in the negative control of cell growth and division. It consists of a common heteromeric core enzyme, which is composed of a catalytic subunit and a constant regulatory subunit, that associates with a variety of regulatory subunits. This gene encodes an alpha isoform of the catalytic subunit.

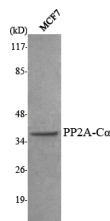
Recommended Dilution

IF: 1:100 - 1:500

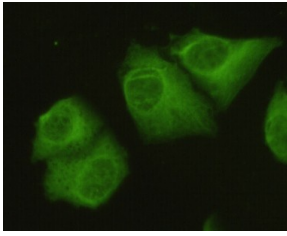
WB: 1:1000 - 1:2000

Not yet tested in other applications.

Images



Western Blot analysis using PP2A-C Alpha Monoclonal antibody against MCF7 cell lysate.



Immunofluorescence analysis of HeLa cells using PP2A-CAlpha Monoclonal antibody.

Storage

-20°C for one year

501 Changsheng S Rd, Nanhu Dist, Jiaxing, Zhejiang, China

Tel: 86 21 31007137 | E-mail: save@bt-laboratory.com | www.bt-laboratory.com