

PP2B-A Alpha Monoclonal Antibody

Description

Product type	Primary Antibody
Code	BT-MCA1049
Host	Mouse
Isotype	IgG
Size	50ul, 100ul
Immunogen	Purified recombinant human PP2B-A α protein fragments expressed in E.coli.
Mol wt	N/A
Species reactivity	Human,Mouse,Rat
Clonality	Monoclonal
Recommended application	WB
Concentration	1 mg/ml
Full name	Serine,threonine-protein phosphatase 2B catalytic subunit alpha isoform
Synonyms	PPP3CA; CALNA; CNA; Serine; threonine-protein phosphatase 2B catalytic subunit alpha isoform; CAM-PRP catalytic subunit; Calmodulin-dependent calcineurin A subunit alpha isoform

This product is for research use only, not for use in human, therapeutic or diagnostic procedure.

Background

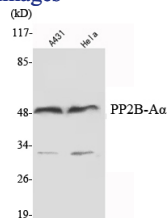
Catalytic activity:A phosphoprotein + H₂O = a protein + phosphate.,cofactor: Binds 1 Fe(3+) ion per subunit.,cofactor: Binds 1 zinc ion per subunit.,function: Calcium-dependent, calmodulin-stimulated protein phosphatase. This subunit may have a role in the calmodulin activation of calcineurin. Dephosphorylates HSPB1 and SSH1.,online information: Calcineurin entry,similarity: Belongs to the PPP phosphatase family.,similarity: Belongs to the PPP phosphatase family. PP-2B subfamily.,subcellular location: Colocalizes with ACTN1 and MYOZ2 at the Z line in heart and skeletal muscle.,subunit: Composed of two components (A and B), the A component is the catalytic subunit and the B component confers calcium sensitivity. Interacts with TORC2/CRTC2, MYOZ1, MYOZ2 and MYOZ3.,

Recommended Dilution

WB: 1:1000 - 1:2000

Not yet tested in other applications.

Images



Western Blot analysis using PP2B-A α Monoclonal antibody against A431. HeLa cell lysate .

Storage

-20°C for one year