

PPX Monoclonal Antibody

Description

Product type	Primary Antibody
Code	BT-MCA1055
Host	Mouse
Isotype	IgG
Size	50ul, 100ul
Immunogen	Purified recombinant human PPX protein fragments expressed in E.coli.
Mol wt	N/A
Species reactivity	Human,Mouse,Rat,Bovine,Dog,Zebrafish
Clonality	Monoclonal
Recommended application	WB, IHC-p, IF, ICC
Concentration	1 mg/ml
Full name	Serine,threonine-protein phosphatase 4 catalytic subunit
Synonyms	PPP4C; PPP4; PPX; Serine; threonine-protein phosphatase 4 catalytic subunit; PP4C; Pp4; Protein phosphatase X; PP-X

This product is for research use only, not for use in human, therapeutic or diagnostic procedure.

Background

catalytic activity:A phosphoprotein + H(2)O = a protein + phosphate.,cofactor: Binds 1 iron ion per subunit.,cofactor: Binds 1 manganese ion per subunit.,function: Protein phosphatase that is involved in many processes such as microtubule organization at centrosomes, maturation of spliceosomal snRNPs, apoptosis, tumor necrosis factor (TNF)-alpha signaling, activation of c-Jun N-terminal kinase MAPK8, regulation of histone acetylation, DNA damage checkpoint signaling, NF-kappa-B activation and cell migration. The PPP4C-PPP4R1 PP4 complex may play a role in dephosphorylation and regulation of HDAC3. The PPP4C-PPP4R2-PPP4R3A PP4 complex specifically dephosphorylates H2AFX phosphorylated on Ser-140 (gamma-H2AFX) generated during DNA replication and required for DNA DSB repair. Dephosphorylates NDEL1 at CDC2/Cdk1 phosphorylation sites and negatively regulates CDC2/Cdk1 activity in interphase.,similarity: Belongs to the PPP phosphatase family.,similarity: Belongs to the PPP phosphatase family. PP-4 (PP-X) subfamily.,subunit: Serine/threonine-protein phosphatase 4 (PP4) occurs in different assemblies of the catalytic and one or more regulatory subunits. Component of the PP4 complexes PPP4C-PPP4R1, PPP4C-PPP4R2, PPP4C-PPP4R2-PPP4R3A, PPP4C-PPP4R2-PPP4R3B and PPP4C-PPP4R4. The PPP4C-PPP4R2 complex appears to be a tetramer composed of 2 molecules of PPP4C and 2 molecules of PPP4R2. Interacts with REL, NFKB1/p50 and RELA. Interacts with SMN1 AND GEMIN4. Interacts with IRS4 (phosphorylated). Interacts with SMEK1/PPP4R3A| the interaction requires PP4R2. Interacts with HDAC3.,

Recommended Dilution

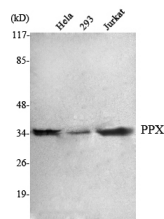
IF: 1:100 - 1:500

IHC: 1:500 - 1:1000

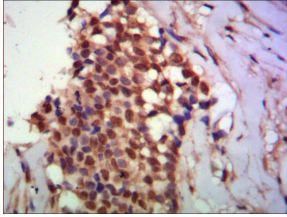
WB: 1:1000 - 1:2000

Not yet tested in other applications.

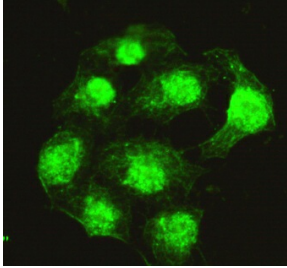
Images



Western Blot analysis using PPX Monoclonal antibody against HeLa, 293, Jurkat cell lysate.



Immunohistochemistry analysis of paraffin-embedded human breast cancer using PPX Monoclonal antibody.



Immunofluorescence analysis of HeLa cells using PPX Monoclonal antibody.

Storage

-20°C for one year

501 Changsheng S Rd, Nanhui Dist, Jiading, Zhejiang, China

Tel: 86 21 31007137 | E-mail: save@bt-laboratory.com | www.bt-laboratory.com