

PR Monoclonal Antibody

Description

Product type	Primary Antibody
Code	BT-MCA1058
Host	Mouse
Isotype	IgG
Size	50ul, 100ul
Immunogen	Purified recombinant fragment of PR expressed in E. Coli.
Mol wt	N/A
Species reactivity	Human
Clonality	Monoclonal
Recommended application	WB, IHC-p, IF, ELISA
Concentration	1 mg/ml
Full name	Progesterone receptor
Synonyms	PGR; NR3C3; Progesterone receptor; PR; Nuclear receptor subfamily 3 group C member 3

This product is for research use only, not for use in human, therapeutic or diagnostic procedure.

Background

This gene encodes a member of the steroid receptor superfamily. The encoded protein mediates the physiological effects of progesterone, which plays a central role in reproductive events associated with the establishment and maintenance of pregnancy. This gene uses two distinct promoters and translation start sites in the first exon to produce several transcript variants, both protein coding and non-protein coding. Two of the isoforms (A and B) are identical except for an additional 165 amino acids found in the N-terminus of isoform B and mediate their own response genes and physiologic effects with little overlap.

Recommended Dilution

ELISA: 1:10000

IHC: 1:200 - 1:1000

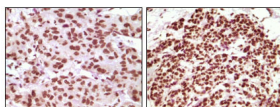
WB: 1:500 - 1:2000

Not yet tested in other applications.

Images



Western Blot analysis using PR Monoclonal antibody against PR recombinant protein (1).



Immunohistochemistry analysis of paraffin-embedded human infiltrating ductal carcinoma tissue(left) and simple carcinoma of breast cancer tissue(right), showing nuclear localization with DAB staining using PR Monoclonal antibody.

Storage

-20°C for one year

501 Changsheng S Rd, Nanhu Dist, Jiaxing, Zhejiang, China
Tel: 86 21 31007137 | E-mail: save@bt-laboratory.com | www.bt-laboratory.com