

PRK2 Monoclonal Antibody

Description

Product type	Primary Antibody
Code	BT-MCA1062
Host	Mouse
Isotype	IgG
Size	50ul, 100ul
Immunogen	Purified recombinant fragment of human PRK2 expressed in E. Coli.
Mol wt	N/A
Species reactivity	Human,Mouse,Rat,Monkey
Clonality	Monoclonal
Recommended application	WB, IHC-p, IF, FCM, ELISA
Concentration	1 mg/ml
Full name	Serine,threonine-protein kinase N2
Synonyms	PKN2; PRK2; PRKCL2; Serine; threonine-protein kinase N2; PKN gamma; Protein kinase C-like 2; Protein-kinase C-related kinase 2

This product is for research use only, not for use in human, therapeutic or diagnostic procedure.

Background

Catalytic activity:ATP + a protein = ADP + a phosphoprotein.,domain:The C1 domain does not bind the diacylglycerol (DAG).,enzyme regulation:Activated by lipids, particularly cardiolipin and to a lesser extent by other acidic phospholipids and unsaturated fatty acids. Two specific sites, Thr-816 (activation loop of the kinase domain) and Thr-958 (turn motif), need to be phosphorylated for its full activation.,function:Exhibits a preference for highly basic protein substrates.,PTM:Activated by limited proteolysis with trypsin.,PTM:Autophosphorylated.,similarity:Belongs to the protein kinase superfamily.,similarity:Belongs to the protein kinase superfamily. AGC Ser/Thr protein kinase family. PKC subfamily.,similarity:Contains 1 AGC-kinase C-terminal domain.,similarity:Contains 1 C2 domain.,similarity:Contains 1 protein kinase domain.,similarity:Contains 3 REM (Hr1) repeats.,

Recommended Dilution

ELISA: 1:10000

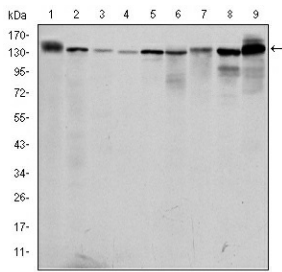
FC: 1:200 - 1:400

IHC: 1:200 - 1:1000

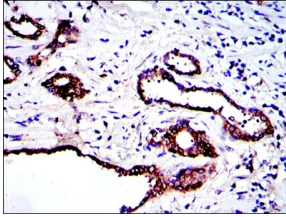
WB: 1:500 - 1:2000

Not yet tested in other applications.

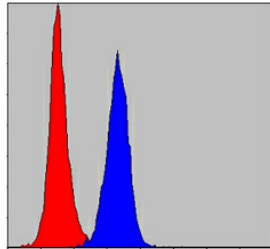
Images



Western Blot analysis using PRK2 Monoclonal antibody against PC-12 (1) Cos7 (2) K562 (3) Jurkat (4) HeLa (5) A431 (6) C6 (7) NIH/3T3 (8) and HEK293 (9) cell lysate.



Immunohistochemistry analysis of paraffin-embedded prostate tissues with DAB staining using PRK2 Monoclonal antibody.



Flow cytometric analysis of NIH/3T3 cells using PRK2 Monoclonal antibody (blue) and negative control (red).

Storage

-20°C for one year

501 Changsheng S Rd, Nanhu Dist, Jiaxing, Zhejiang, China

Tel: 86 21 31007137 | E-mail: save@bt-laboratory.com | www.bt-laboratory.com