

PRMT4 Monoclonal Antibody

Description

Product type	Primary Antibody
Code	BT-MCA1065
Host	Mouse
Isotype	IgG
Size	50ul, 100ul
Immunogen	Purified recombinant fragment of human PRMT4 expressed in E. Coli.
Mol wt	N/A
Species reactivity	Human,Rat,Monkey
Clonality	Monoclonal
Recommended application	WB, IHC-p, IF, ICC, FCM, ELISA
Concentration	1 mg/ml
Full name	Histone-arginine methyltransferase CARM1
Synonyms	CARM1; PRMT4; Histone-arginine methyltransferase CARM1; Coactivator-associated arginine methyltransferase 1; Protein arginine N-methyltransferase 4

This product is for research use only, not for use in human, therapeutic or diagnostic procedure.

Background

This gene belongs to the protein arginine methyltransferase (PRMT) family. The encoded enzyme catalyzes the methylation of guanidino nitrogens of arginyl residues of proteins. The enzyme acts specifically on histones and other chromatin-associated proteins and is involved in regulation of gene expression. The enzyme may act in association with other proteins or within multi-protein complexes and may play a role in cell type-specific functions and cell lineage specification. A related pseudogene is located on chromosome 9.

Recommended Dilution

FC: 1:200 - 1:400

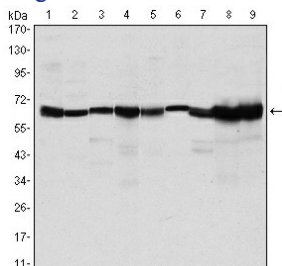
IF: 1:200 - 1:1000

IHC: 1:200 - 1:1000

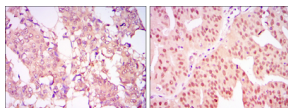
WB: 1:500 - 1:2000

Not yet tested in other applications.

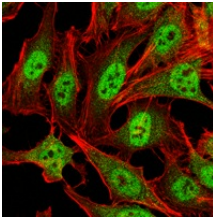
Images



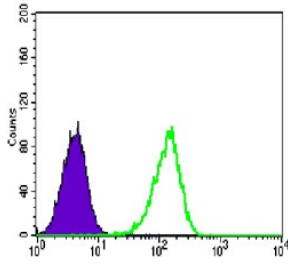
Western Blot analysis using PRMT4 Monoclonal antibody against MCF-7 (1) HeLa (2) NIH/3T3 (3) HL-60 (4) LNCap (5) Jurkat (6) PC-3 (7) Cos7 (8) and PC-12 (9) cell lysate.



Immunohistochemistry analysis of paraffin-embedded breast cancer tissues (left) and ovarian cancer tissues (right) with DAB staining using PRMT4 Monoclonal antibody.



Immunofluorescence analysis of HeLa cells using PRMT4 Monoclonal antibody (green). Red: Actin filaments have been labeled with Alexa Fluor-555 phalloidin.



Flow cytometric analysis of Lovo cells using PRMT4 Monoclonal antibody (green) and negative control (purple).

Storage

-20°C for one year

501 Changsheng S Rd, Nanhu Dist, Jiaxing, Zhejiang, China

Tel: 86 21 31007137 | E-mail: save@bt-laboratory.com | www.bt-laboratory.com