

## PSR Monoclonal Antibody

### Description

<b>Product type</b>	Primary Antibody
<b>Code</b>	BT-MCA1071
<b>Host</b>	Mouse
<b>Isotype</b>	IgG
<b>Size</b>	50ul, 100ul
<b>Immunogen</b>	Purified recombinant human PSR (N-terminus) protein fragments expressed in E.coli.
<b>Mol wt</b>	N/A
<b>Species reactivity</b>	Human,Mouse,Rat,Bovine,Dog
<b>Clonality</b>	Monoclonal
<b>Recommended application</b>	WB, IF, ICC
<b>Concentration</b>	1 mg/ml
<b>Full name</b>	Bifunctional arginine demethylase and lysyl-hydroxylase JMJD6
<b>Synonyms</b>	JMJD6; KIAA0585; PTDSR; Bifunctional arginine demethylase and lysyl-hydroxylase JMJD6; Histone arginine demethylase JMJD6; JmjC domain-containing protein 6; Jumonji domain-containing protein 6; Lysyl-hydroxylase JMJD6; Peptide-lysine 5-diox

This product is for research use only, not for use in human, therapeutic or diagnostic procedure.

### Background

This gene encodes a nuclear protein with a JmjC domain. JmjC domain-containing proteins are predicted to function as protein hydroxylases or histone demethylases. This protein was first identified as a putative phosphatidylserine receptor involved in phagocytosis of apoptotic cells; however, subsequent studies have indicated that it does not directly function in the clearance of apoptotic cells, and questioned whether it is a true phosphatidylserine receptor. Multiple transcript variants encoding different isoforms have been found for this gene.

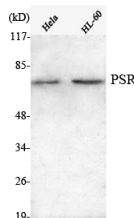
### Recommended Dilution

IF: 1:100 - 1:500

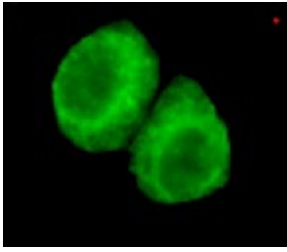
WB: 1:1000 - 1:2000

Not yet tested in other applications.

### Images



Western Blot analysis using PSR Monoclonal antibody against HeLa, HL-60 cell lysate.



Immunofluorescence analysis of HeLa cells using PSR Monoclonal antibody.

### Storage

-20°C for one year

501 Changsheng S Rd, Nanhu Dist, Jiaxing, Zhejiang, China

Tel: 86 21 31007137 | E-mail: [save@bt-laboratory.com](mailto:save@bt-laboratory.com) | [www.bt-laboratory.com](http://www.bt-laboratory.com)