

## PTH/PTHrP-R Monoclonal Antibody

### Description

<b>Product type</b>	Primary Antibody
<b>Code</b>	BT-MCA1076
<b>Host</b>	Mouse
<b>Isotype</b>	IgG
<b>Size</b>	50ul, 100ul
<b>Immunogen</b>	Purified recombinant fragment of human PTH/PTHrP-R expressed in E. Coli.
<b>Mol wt</b>	N/A
<b>Species reactivity</b>	Human
<b>Clonality</b>	Monoclonal
<b>Recommended application</b>	WB, IHC-p, IF, ICC, ELISA
<b>Concentration</b>	1 mg/ml
<b>Full name</b>	Parathyroid hormone,parathyroid hormone-related peptide receptor
<b>Synonyms</b>	PTH1R; PTHR; PTHR1; Parathyroid hormone; parathyroid hormone-related peptide receptor; PTH; PTHrP type I receptor; PTH; PTHr receptor; Parathyroid hormone 1 receptor; PTH1 receptor

**This product is for research use only, not for use in human, therapeutic or diagnostic procedure.**

### Background

The protein encoded by this gene is a member of the G-protein coupled receptor family 2. This protein is a receptor for parathyroid hormone (PTH) and for parathyroid hormone-like hormone (PTHrP). The activity of this receptor is mediated by G proteins which activate adenylyl cyclase and also a phosphatidylinositol-calcium second messenger system. Defects in this receptor are known to be the cause of Jansen's metaphyseal chondrodysplasia (JMC), chondrodysplasia Blomstrand type (BOCD), as well as enchondromatosis. Two transcript variants encoding the same protein have been found for this gene.

### Recommended Dilution

ELISA: 1:10000

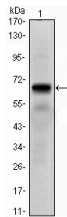
IF: 1:200 - 1:1000

IHC: 1:200 - 1:1000

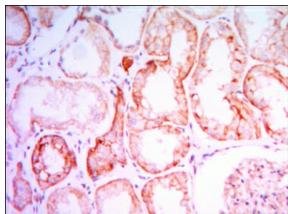
WB: 1:500 - 1:2000

Not yet tested in other applications.

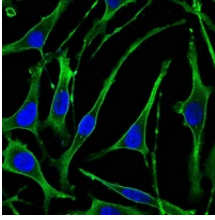
### Images



Western Blot analysis using PTH/PTHrP-R Monoclonal antibody against PTH1R-hlgGfC transfected HEK293 cell lysate.



Immunohistochemistry analysis of paraffin-embedded human kidney tissues with DAB staining using PTH/PTHrP-R Monoclonal antibody.



Immunofluorescence analysis of SK-BR-3 cells using PTH/PTHrP-R Monoclonal antibody (green).  
Blue: DRAQ5 fluorescent DNA dye.

### Storage

-20°C for one year

501 Changsheng S Rd, Nanhu Dist, Jiaxing, Zhejiang, China

Tel: 86 21 31007137 | E-mail: [save@bt-laboratory.com](mailto:save@bt-laboratory.com) | [www.bt-laboratory.com](http://www.bt-laboratory.com)