

Rab 10 Monoclonal Antibody

Description

Product type	Primary Antibody
Code	BT-MCA1080
Host	Mouse
Isotype	IgG
Size	50ul, 100ul
Immunogen	Purified recombinant fragment of human Rab 10 expressed in E. Coli.
Mol wt	N/A
Species reactivity	Human,Mouse
Clonality	Monoclonal
Recommended application	WB, IF, ICC, ELISA
Concentration	1 mg/ml
Full name	Ras-related protein Rab-10
Synonyms	RAB10; Ras-related protein Rab-10

This product is for research use only, not for use in human, therapeutic or diagnostic procedure.

Background

RAB10 belongs to the RAS (see HRAS| MIM 190020) superfamily of small GTPases. RAB proteins localize to exocytic and endocytic compartments and regulate intracellular vesicle trafficking (Bao et al., 1998 [PubMed 9918381]).[supplied by OMIM, Mar 2009],

Recommended Dilution

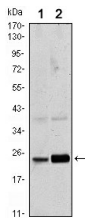
ELISA: 1:10000

IF: 1:200 - 1:1000

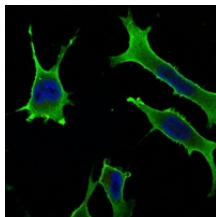
WB: 1:500 - 1:2000

Not yet tested in other applications.

Images



Western Blot analysis using Rab 10 Monoclonal antibody against HeLa (1) and NIH/3T3 (2) cell lysate.



Immunofluorescence analysis of LOVO cells using Rab 10 Monoclonal antibody (green). Blue: DRAQ5 fluorescent DNA dye.

Storage

-20°C for one year

501 Changsheng S Rd, Nanhu Dist, Jiaxing, Zhejiang, China

Tel: 86 21 31007137 | E-mail: save@bt-laboratory.com | www.bt-laboratory.com