

## Rictor Monoclonal Antibody

### Description

<b>Product type</b>	Primary Antibody
<b>Code</b>	BT-MCA1103
<b>Host</b>	Mouse
<b>Isotype</b>	IgG
<b>Size</b>	50ul, 100ul
<b>Immunogen</b>	Purified recombinant fragment of human Rictor expressed in E. Coli.
<b>Mol wt</b>	N/A
<b>Species reactivity</b>	Human,Mouse,Monkey
<b>Clonality</b>	Monoclonal
<b>Recommended application</b>	WB, IHC-p, IF, ICC, FCM, ELISA
<b>Concentration</b>	1 mg/ml
<b>Full name</b>	Rapamycin-insensitive companion of mTOR
<b>Synonyms</b>	RICTOR; KIAA1999; Rapamycin-insensitive companion of mTOR; AVO3 homolog; hAVO3

**This product is for research use only, not for use in human, therapeutic or diagnostic procedure.**

### Background

RICTOR and MTOR (FRAP1| MIM 601231) are components of a protein complex that integrates nutrient- and growth factor-derived signals to regulate cell growth (Sarbasov et al., 2004 [PubMed 15268862]).[supplied by OMIM, Mar 2008],

### Recommended Dilution

FC: 1:200 - 1:400

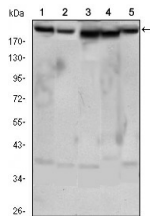
IF: 1:200 - 1:1000

IHC: 1:200 - 1:1000

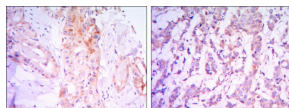
WB: 1:500 - 1:2000

Not yet tested in other applications.

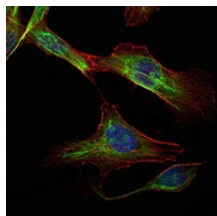
### Images



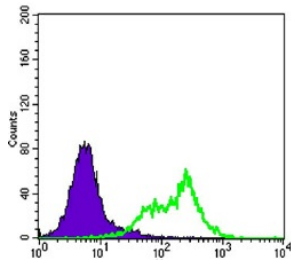
Western Blot analysis using Rictor Monoclonal antibody against HeLa (1) PANC-1 (2) MOLT4 (3) HepG2 (4) and HEK293 (5) cell lysate.



Immunohistochemistry analysis of paraffin-embedded thyroid gland tissues (left) and human breast carcinoma (right) with DAB staining using Rictor Monoclonal antibody.



Immunofluorescence analysis of NIH/3T3 cells using Rictor Monoclonal antibody (green). Blue: DRAQ5 fluorescent DNA dye. Red: Actin filaments have been labeled with Alexa Fluor-555 phalloidin.



Flow cytometric analysis of HeLa cells using Rictor Monoclonal antibody (green) and negative control (purple).

### Storage

-20°C for one year

501 Changsheng S Rd, Nanhu Dist, Jiaxing, Zhejiang, China

Tel: 86 21 31007137 | E-mail: [save@bt-laboratory.com](mailto:save@bt-laboratory.com) | [www.bt-laboratory.com](http://www.bt-laboratory.com)