

ROR1 Monoclonal Antibody

Description

Product type	Primary Antibody
Code	BT-MCA1106
Host	Mouse
Isotype	IgG
Size	50ul, 100ul
Immunogen	Recombinant extracellular fragment of human ROR1 (aa30-406) fused with hlgGfc tag, expressed in HEK293 cells
Mol wt	N/A
Species reactivity	Human
Clonality	Monoclonal
Recommended application	WB, IF, ICC, ELISA
Concentration	1 mg/ml
Full name	Tyrosine-protein kinase transmembrane receptor ROR1
Synonyms	ROR1; NTRKR1; Tyrosine-protein kinase transmembrane receptor ROR1; Neurotrophic tyrosine kinase; receptor-related 1

This product is for research use only, not for use in human, therapeutic or diagnostic procedure.

Background

This gene encodes a receptor tyrosine kinase-like orphan receptor that modulates neurite growth in the central nervous system. The encoded protein is a glycosylated type I membrane protein that belongs to the ROR subfamily of cell surface receptors. It is a pseudokinase that lacks catalytic activity and may interact with the non-canonical Wnt signalling pathway. This gene is highly expressed during early embryonic development but expressed at very low levels in adult tissues. Increased expression of this gene is associated with B-cell chronic lymphocytic leukaemia. Alternative splicing results in multiple transcript variants encoding different isoforms.

Recommended Dilution

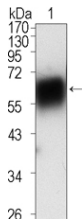
ELISA: 1:10000

IF: 1:200 - 1:1000

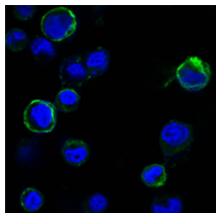
WB: 1:500 - 1:2000

Not yet tested in other applications.

Images



Western Blot analysis using ROR1 Monoclonal antibody against extracellular domain of human ROR1 (aa30-423).



Confocal immunofluorescence analysis of HEK293 cells transfected with extracellular ROR1 (aa30-406)-hlgGfc using ROR1 Monoclonal antibody (green). Blue: DRAQ5 fluorescent DNA dye.

Storage

-20°C for one year

501 Changsheng S Rd, Nanhu Dist, Jiaxing, Zhejiang, China

Tel: 86 21 31007137 | E-mail: save@bt-laboratory.com | www.bt-laboratory.com