

SAF-B Monoclonal Antibody

Description

Product type	Primary Antibody
Code	BT-MCA1120
Host	Mouse
Isotype	IgG
Size	50ul, 100ul
Immunogen	Purified recombinant human SAF-B protein fragments expressed in E.coli.
Mol wt	N/A
Species reactivity	Human
Clonality	Monoclonal
Recommended application	WB
Concentration	1 mg/ml
Full name	Scaffold attachment factor B1
Synonyms	SAFB; HAP; HET; SAFB1; Scaffold attachment factor B1; SAF-B; SAF-B1; HSP27 estrogen response element-TATA box-binding protein; HSP27 ERE-TATA-binding protein

This product is for research use only, not for use in human, therapeutic or diagnostic procedure.

Background

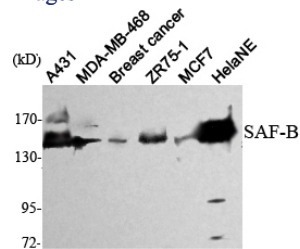
This gene encodes a DNA-binding protein which has high specificity for scaffold or matrix attachment region DNA elements (S/MAR DNA). This protein is thought to be involved in attaching the base of chromatin loops to the nuclear matrix but there is conflicting evidence as to whether this protein is a component of chromatin or a nuclear matrix protein. Scaffold attachment factors are a specific subset of nuclear matrix proteins (NMP) that specifically bind to S/MAR. The encoded protein is thought to serve as a molecular base to assemble a 'transcriptosome complex' in the vicinity of actively transcribed genes. It is involved in the regulation of heat shock protein 27 transcription, can act as an estrogen receptor co-repressor and is a candidate for breast tumorigenesis. This gene is arranged head-to-head with a similar gene whose product has the same functions. Multiple transcript v

Recommended Dilution

WB: 1:1000 - 1:2000

Not yet tested in other applications.

Images



Western Blot analysis using SAF-B Monoclonal antibody against HeLa nuclear extract, A431, MDA-MB-468, breast cancer, ZR75-1, MCF7 cell lysate.

Storage

-20°C for one year