

SGK1 mouse Monoclonal Antibody(4D12)

Description

Product type	Primary Antibody
Code	BT-MCA1125
Host	Mouse
Isotype	IgG
Size	20ul, 50ul, 100ul
Immunogen	Synthetic Peptide of SGK1 at AA range of 350-430
Mol wt	N/A
Species reactivity	Human,Rat,Mouse
Clonality	Monoclonal
Recommended application	IHC-p, IF
Concentration	1 mg/ml
Full name	SGK1
Synonyms	SGK1

This product is for research use only, not for use in human, therapeutic or diagnostic procedure.

Background

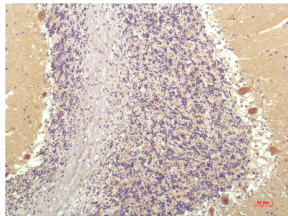
This gene encodes a serine/threonine protein kinase that plays an important role in cellular stress response. This kinase activates certain potassium, sodium, and chloride channels, suggesting an involvement in the regulation of processes such as cell survival, neuronal excitability, and renal sodium excretion. High levels of expression of this gene may contribute to conditions such as hypertension and diabetic nephropathy. Several alternatively spliced transcript variants encoding different isoforms have been noted for this gene.

Recommended Dilution

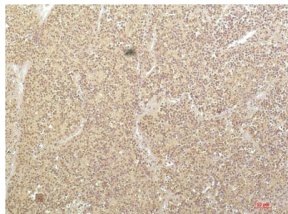
IHC: 1:100-200

Not yet tested in other applications.

Images



Immunohistochemical analysis of paraffin-embedded Human Brain Tissue using SGK1 Mouse Monoclonal antibody diluted at 1:200.



Immunohistochemical analysis of paraffin-embedded Human Kidney Carcinoma Tissue using SGK1 Mouse Monoclonal antibody diluted at 1:200.

Storage

-20°C for one year

501 Changsheng S Rd, Nanhu Dist, Jiaxing, Zhejiang, China

Tel: 86 21 31007137 | E-mail: save@bt-laboratory.com | www.bt-laboratory.com