

SMC1 Monoclonal Antibody

Description

Product type	Primary Antibody
Code	BT-MCA1141
Host	Mouse
Isotype	IgG
Size	50ul, 100ul
Immunogen	Purified recombinant human SMC1 (N-terminus) protein fragments expressed in E.coli.
Mol wt	N/A
Species reactivity	Human,Mouse,Rat,Pig
Clonality	Monoclonal
Recommended application	WB, IHC-p, IF, FCM
Concentration	1 mg/ml
Full name	Structural maintenance of chromosomes protein 1A
Synonyms	SMC1A; DXS423E; KIAA0178; SB1.8; SMC1; SMC1L1; Structural maintenance of chromosomes protein 1A; SMC protein 1A; SMC-1-alpha; SMC-1A; Sb1.8

This product is for research use only, not for use in human, therapeutic or diagnostic procedure.

Background

Proper cohesion of sister chromatids is a prerequisite for the correct segregation of chromosomes during cell division. The cohesin multiprotein complex is required for sister chromatid cohesion. This complex is composed partly of two structural maintenance of chromosomes (SMC) proteins, SMC3 and either SMC1B or the protein encoded by this gene. Most of the cohesin complexes dissociate from the chromosomes before mitosis, although those complexes at the kinetochore remain. Therefore, the encoded protein is thought to be an important part of functional kinetochores. In addition, this protein interacts with BRCA1 and is phosphorylated by ATM, indicating a potential role for this protein in DNA repair. This gene, which belongs to the SMC gene family, is located in an area of the X-chromosome that escapes X inactivation. Mutations in this gene result in Cornelia de Lange syndrome. Altern

Recommended Dilution

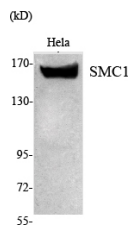
FC: 1:100 - 1:200

IHC: 1:500 - 1:1000

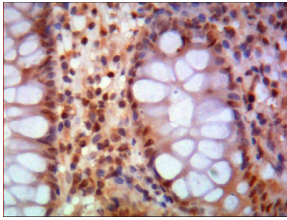
WB: 1:1000 - 1:2000

Not yet tested in other applications.

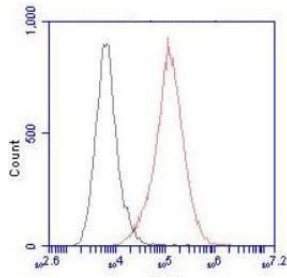
Images



Western Blot analysis using SMC1 Monoclonal antibody against HeLa nuclear extract.



Immunohistochemistry analysis of paraffin-embedded human colon using SMC1 Monoclonal antibody.



Flow cytometric analysis of HeLa cells stained with SMC1 Monoclonal antibody (red), followed by FITC-conjugated goat anti-mouse IgG. Black line histogram represents the isotype control, normal mouse IgG.

Storage

-20°C for one year

501 Changsheng S Rd, Nanhu Dist, Jiaxing, Zhejiang, China

Tel: 86 21 31007137 | E-mail: save@bt-laboratory.com | www.bt-laboratory.com