

## SmcX Monoclonal Antibody

### Description

<b>Product type</b>	Primary Antibody
<b>Code</b>	BT-MCA1143
<b>Host</b>	Mouse
<b>Isotype</b>	IgG
<b>Size</b>	50ul, 100ul
<b>Immunogen</b>	Purified recombinant human SmcX (C-terminus) protein fragments expressed in E.coli.
<b>Mol wt</b>	N/A
<b>Species reactivity</b>	Human,Mouse,Rat,Bovine,Dog
<b>Clonality</b>	Monoclonal
<b>Recommended application</b>	WB, IF, ICC
<b>Concentration</b>	1 mg/ml
<b>Full name</b>	Lysine-specific demethylase 5C
<b>Synonyms</b>	KDM5C; DXS1272E; JARID1C; SMCX; XE169; Lysine-specific demethylase 5C; Histone demethylase JARID1C; Jumonji; ARID domain-containing protein 1C; Protein SmcX; Protein Xe169

This product is for research use only, not for use in human, therapeutic or diagnostic procedure.

### Background

This gene is a member of the SMCY homolog family and encodes a protein with one ARID domain, one JmjC domain, one JmjN domain and two PHD-type zinc fingers. The DNA-binding motifs suggest this protein is involved in the regulation of transcription and chromatin remodeling. Mutations in this gene have been associated with X-linked mental retardation. Alternative splicing results in multiple transcript variants.

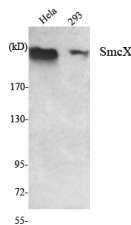
### Recommended Dilution

IF: 1:100 - 1:500

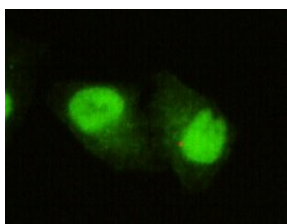
WB: 1:1000 - 1:2000

Not yet tested in other applications.

### Images



Western Blot analysis using SmcX Monoclonal antibody against HeLa, 293 cell lysate.



Immunofluorescence analysis of HeLa cells using SmcX Monoclonal antibody.

## Storage

-20°C for one year

501 Changsheng S Rd, Nanhu Dist, Jiaxing, Zhejiang, China

Tel: 86 21 31007137 | E-mail: [save@bt-laboratory.com](mailto:save@bt-laboratory.com) | [www.bt-laboratory.com](http://www.bt-laboratory.com)