

SMN1 Monoclonal Antibody

Description

Product type	Primary Antibody
Code	BT-MCA1145
Host	Mouse
Isotype	IgG
Size	50ul, 100ul
Immunogen	Purified recombinant fragment of human SMN1 expressed in E. Coli.
Mol wt	N/A
Species reactivity	Human,Monkey
Clonality	Monoclonal
Recommended application	WB, IHC-p, IF, ICC, ELISA
Concentration	1 mg/ml
Full name	Survival motor neuron protein
Synonyms	SMN1; SMN; SMNT; SMN2; SMNC; Survival motor neuron protein; Component of gems 1; Gemin-1

This product is for research use only, not for use in human, therapeutic or diagnostic procedure.

Background

This gene is part of a 500 kb inverted duplication on chromosome 5q13. This duplicated region contains at least four genes and repetitive elements which make it prone to rearrangements and deletions. The repetitiveness and complexity of the sequence have also caused difficulty in determining the organization of this genomic region. The telomeric and centromeric copies of this gene are nearly identical and encode the same protein. However, mutations in this gene, the telomeric copy, are associated with spinal muscular atrophy| mutations in the centromeric copy do not lead to disease. The centromeric copy may be a modifier of disease caused by mutation in the telomeric copy. The critical sequence difference between the two genes is a single nucleotide in exon 7, which is thought to be an exon splice enhancer. Note that the nine exons of both the telomeric and centromeric copies are des

Recommended Dilution

ELISA: 1:10000

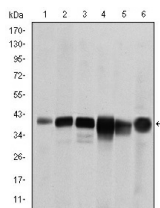
IF: 1:200 - 1:1000

IHC: 1:200 - 1:1000

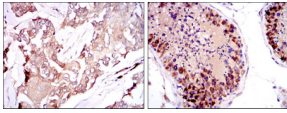
WB: 1:500 - 1:2000

Not yet tested in other applications.

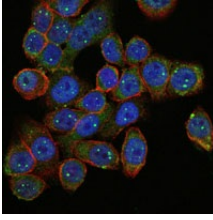
Images



Western Blot analysis using SMN1 Monoclonal antibody against RAJI (1) Cos7 (2) Jurkat (3) K562 (4) HeLa (5) and HepG2 (6) cell lysate.



Immunohistochemistry analysis of paraffin-embedded breast cancer tissues (left) and testis tissues (right) with DAB staining using SMN1 Monoclonal antibody.



Immunofluorescence analysis of HepG2 cells using SMN1 Monoclonal antibody (green). Blue: DRAQ5 fluorescent DNA dye. Red: Actin filaments have been labeled with Alexa Fluor-555 phalloidin.

Storage

-20°C for one year

501 Changsheng S Rd, Nanhu Dist, Jiaxing, Zhejiang, China

Tel: 86 21 31007137 | E-mail: save@bt-laboratory.com | www.bt-laboratory.com