

STAT3 Monoclonal Antibody(3F4)

Description

Product type	Primary Antibody
Code	BT-MCA1165
Host	Mouse
Isotype	IgG
Size	20ul, 50ul, 100ul
Immunogen	Recombinant Protein of STAT3
Mol wt	N/A
Species reactivity	Human,Rat,Mouse
Clonality	Monoclonal
Recommended application	WB, IHC-p, IF
Concentration	1 mg/ml
Full name	Signal transducer and activator of transcription 3
Synonyms	STAT3; APRF; Signal transducer and activator of transcription 3; Acute-phase response factor

This product is for research use only, not for use in human, therapeutic or diagnostic procedure.

Background

The protein encoded by this gene is a member of the STAT protein family. In response to cytokines and growth factors, STAT family members are phosphorylated by the receptor associated kinases, and then form homo- or heterodimers that translocate to the cell nucleus where they act as transcription activators. This protein is activated through phosphorylation in response to various cytokines and growth factors including IFNs, EGF, IL5, IL6, HGF, LIF and BMP2. This protein mediates the expression of a variety of genes in response to cell stimuli, and thus plays a key role in many cellular processes such as cell growth and apoptosis. The small GTPase Rac1 has been shown to bind and regulate the activity of this protein. PIAS3 protein is a specific inhibitor of this protein. Mutations in this gene are associated with infantile-onset multisystem autoimmune disease and hyper

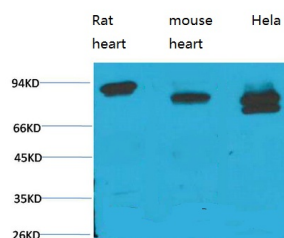
Recommended Dilution

IHC: 1:100-200

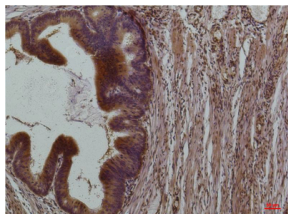
WB: 1:1000-2000

Not yet tested in other applications.

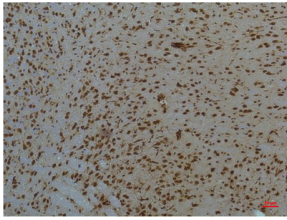
Images



Western blot analysis of 1) Rat Heart Tissue, 2) Mouse Heart Tissue, 3) HeLa with STAT3 Mouse Monoclonal antibody diluted at 1:2,000.



Immunohistochemical analysis of paraffin-embedded Human Colon Carcinoma using STAT3 Mouse Monoclonal antibody diluted at 1:200.



Immunohistochemical analysis of paraffin-embedded Mouse Brain Tissue using STAT3 Mouse Monoclonal antibody diluted at 1:200.

Storage

-20°C for one year

501 Changsheng S Rd, Nanhu Dist, Jiaxing, Zhejiang, China

Tel: 86 21 31007137 | E-mail: save@bt-laboratory.com | www.bt-laboratory.com