

## Synuclein-Gamma Monoclonal Antibody

### Description

<b>Product type</b>	Primary Antibody
<b>Code</b>	BT-MCA1178
<b>Host</b>	Mouse
<b>Isotype</b>	IgG
<b>Size</b>	50ul, 100ul
<b>Immunogen</b>	Purified recombinant fragment of Synuclein- $\gamma$ expressed in E. Coli.
<b>Mol wt</b>	N/A
<b>Species reactivity</b>	Human
<b>Clonality</b>	Monoclonal
<b>Recommended application</b>	WB, IHC-p, IF, ELISA
<b>Concentration</b>	1 mg/ml
<b>Full name</b>	Gamma-synuclein
<b>Synonyms</b>	SNCG; BCSG1; PERSYN; PRSN; Gamma-synuclein; Breast cancer-specific gene 1 protein; Persyn; Synoretin; SR

This product is for research use only, not for use in human, therapeutic or diagnostic procedure.

### Background

This gene encodes a member of the synuclein family of proteins which are believed to be involved in the pathogenesis of neurodegenerative diseases. Mutations in this gene have also been associated with breast tumor development.

### Recommended Dilution

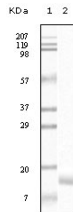
ELISA: 1:10000

IHC: 1:200 - 1:1000

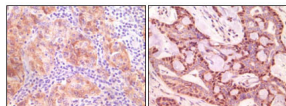
WB: 1:500 - 1:2000

Not yet tested in other applications.

### Images



Western Blot analysis using Synuclein-Gamma Monoclonal antibody against truncated Synuclein-Gamma recombinant protein.



Immunohistochemistry analysis of paraffin-embedded human ovary carcinoma (left) and breast carcinoma (right), showing cytoplasmic (ovary carcinoma) localization, cytoplasmic and nuclear (breast carcinoma) localization with DAB staining using Synuclein-Gamma Mo

### Storage

-20°C for one year