

## TAB2 Monoclonal Antibody

### Description

<b>Product type</b>	Primary Antibody
<b>Code</b>	BT-MCA1182
<b>Host</b>	Mouse
<b>Isotype</b>	IgG
<b>Size</b>	50ul, 100ul
<b>Immunogen</b>	Purified recombinant fragment of human TAB2 expressed in E. Coli.
<b>Mol wt</b>	N/A
<b>Species reactivity</b>	Human
<b>Clonality</b>	Monoclonal
<b>Recommended application</b>	WB, FCM, ELISA
<b>Concentration</b>	1 mg/ml
<b>Full name</b>	TGF-beta-activated kinase 1 and MAP3K7-binding protein 2
<b>Synonyms</b>	TAB2; KIAA0733; MAP3K7IP2; TGF-beta-activated kinase 1 and MAP3K7-binding protein 2; Mitogen-activated protein kinase kinase kinase 7-interacting protein 2; TAK1-binding protein 2; TAB-2; TGF-beta-activated kinase 1-binding protein 2

**This product is for research use only, not for use in human, therapeutic or diagnostic procedure.**

### Background

The protein encoded by this gene is an activator of MAP3K7/TAK1, which is required for the IL-1 induced activation of nuclear factor kappaB and MAPK8/JNK. This protein forms a kinase complex with TRAF6, MAP3K7 and TAB1, and it thus serves as an adaptor that links MAP3K7 and TRAF6. This protein, along with TAB1 and MAP3K7, also participates in the signal transduction induced by TNFSF11/RANK1 through the activation of the receptor activator of NF-kappaB (TNFRSF11A/RANK), which may regulate the development and function of osteoclasts. Studies of the related mouse protein indicate that it functions to protect against liver damage caused by chemical stressors. Mutations in this gene cause congenital heart defects, multiple types, 2 (CHTD2). Alternative splicing results in multiple transcript variants.

### Recommended Dilution

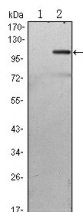
ELISA: 1:10000

FC: 1:200 - 1:400

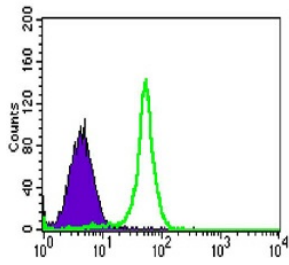
WB: 1:500 - 1:2000

Not yet tested in other applications.

### Images



Western Blot analysis using TAB2 Monoclonal antibody against HEK293 (1) and TAB2-hIgGfc transfected HEK293 (2) cell lysate.



Flow cytometric analysis of HL-60 cells using TAB2 Monoclonal antibody (green) and negative control (purple).

### Storage

-20°C for one year

501 Changsheng S Rd, Nanhu Dist, Jiaxing, Zhejiang, China

Tel: 86 21 31007137 | E-mail: [save@bt-laboratory.com](mailto:save@bt-laboratory.com) | [www.bt-laboratory.com](http://www.bt-laboratory.com)