

## Tau mouse Monoclonal Antibody(10E3)

### Description

Product type	Primary Antibody
Code	BT-MCA1185
Host	Mouse
Isotype	IgG
Size	20ul, 50ul, 100ul
Immunogen	Synthetic Peptide of Tau
Mol wt	N/A
Species reactivity	Human,Rat,Mouse
Clonality	Monoclonal
Recommended application	WB, IHC-p, IF
Concentration	1 mg/ml
Full name	MAPT
Synonyms	MAPT

This product is for research use only, not for use in human, therapeutic or diagnostic procedure.

### Background

This gene encodes the microtubule-associated protein tau (MAPT) whose transcript undergoes complex, regulated alternative splicing, giving rise to several mRNA species. MAPT transcripts are differentially expressed in the nervous system, depending on stage of neuronal maturation and neuron type. MAPT gene mutations have been associated with several neurodegenerative disorders such as Alzheimer's disease, Pick's disease, frontotemporal dementia, cortico-basal degeneration and progressive supranuclear palsy.

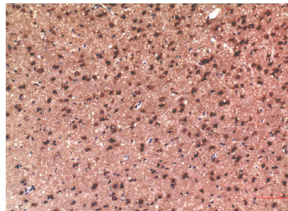
### Recommended Dilution

IHC: 1:100-200

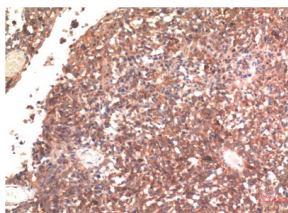
WB: 1:1000-2000

Not yet tested in other applications.

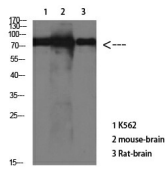
### Images



Immunohistochemical analysis of paraffin-embedded Rat Brain Tissue using Tau Mouse Monoclonal antibody diluted at 1:200



Immunohistochemical analysis of paraffin-embedded Human Brain Tissue using Tau Mouse Monoclonal antibody diluted at 1:200



Western Blot analysis of various cells using Antibody diluted at 1:1000

### Storage

-20°C for one year

501 Changsheng S Rd, Nanhu Dist, Jiaxing, Zhejiang, China

Tel: 86 21 31007137 | E-mail: [save@bt-laboratory.com](mailto:save@bt-laboratory.com) | [www.bt-laboratory.com](http://www.bt-laboratory.com)