

TBL1X Monoclonal Antibody

Description

| | |
|--------------------------------|--|
| Product type | Primary Antibody |
| Code | BT-MCA1186 |
| Host | Mouse |
| Isotype | IgG |
| Size | 50ul, 100ul |
| Immunogen | Purified recombinant fragment of human TBL1X expressed in E. Coli. |
| Mol wt | N/A |
| Species reactivity | Human,Monkey |
| Clonality | Monoclonal |
| Recommended application | WB, ELISA |
| Concentration | 1 mg/ml |
| Full name | F-box-like,WD repeat-containing protein TBL1X |
| Synonyms | TBL1X; TBL1; F-box-like; WD repeat-containing protein TBL1X; SMAP55; Transducin beta-like protein 1X; Transducin-beta-like protein 1; X-linked |

This product is for research use only, not for use in human, therapeutic or diagnostic procedure.

Background

The protein encoded by this gene has sequence similarity with members of the WD40 repeat-containing protein family. The WD40 group is a large family of proteins, which appear to have a regulatory function. It is believed that the WD40 repeats mediate protein-protein interactions and members of the family are involved in signal transduction, RNA processing, gene regulation, vesicular trafficking, cytoskeletal assembly and may play a role in the control of cytotypic differentiation. This encoded protein is found as a subunit in corepressor SMRT (silencing mediator for retinoid and thyroid receptors) complex along with histone deacetylase 3 protein. This gene is located adjacent to the ocular albinism gene and it is thought to be involved in the pathogenesis of the ocular albinism with late-onset sensorineural deafness phenotype. Four transcript variants encoding two different isoforms have been

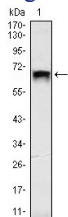
Recommended Dilution

ELISA: 1:10000

WB: 1:500 - 1:2000

Not yet tested in other applications.

Images



Western Blot analysis using TBL1X Monoclonal antibody against HEK293 (1) cell lysate.

Storage

-20°C for one year