

## TBL1XR1 Monoclonal Antibody

### Description

<b>Product type</b>	Primary Antibody
<b>Code</b>	BT-MCA1187
<b>Host</b>	Mouse
<b>Isotype</b>	IgG
<b>Size</b>	50ul, 100ul
<b>Immunogen</b>	Purified recombinant human TBL1XR1 protein fragments expressed in E.coli.
<b>Mol wt</b>	N/A
<b>Species reactivity</b>	Human,Mouse,Rat,Bovine,Chicken,Dog,Pig,Zebrafish
<b>Clonality</b>	Monoclonal
<b>Recommended application</b>	WB, IHC-p, IF, ICC
<b>Concentration</b>	1 mg/ml
<b>Full name</b>	F-box-like,WD repeat-containing protein TBL1XR1
<b>Synonyms</b>	TBL1XR1; IRA1; TBLR1; F-box-like; WD repeat-containing protein TBL1XR1; Nuclear receptor corepressor; HDAC3 complex subunit TBLR1; TBL1-related protein 1; Transducin beta-like 1X-related protein 1

This product is for research use only, not for use in human, therapeutic or diagnostic procedure.

### Background

This gene is a member of the WD40 repeat-containing gene family and shares sequence similarity with transducin (beta)-like 1X-linked (TBL1X). The protein encoded by this gene is thought to be a component of both nuclear receptor corepressor (N-CoR) and histone deacetylase 3 (HDAC 3) complexes, and is required for transcriptional activation by a variety of transcription factors. Mutations in these gene have been associated with some autism spectrum disorders, and one finding suggests that haploinsufficiency of this gene may be a cause of intellectual disability with dysmorphism. Mutations in this gene as well as recurrent translocations involving this gene have also been observed in some tumors.

### Recommended Dilution

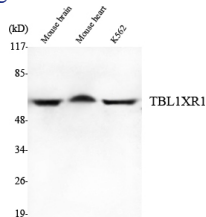
IF: 1:100 - 1:500

IHC: 1:500 - 1:1000

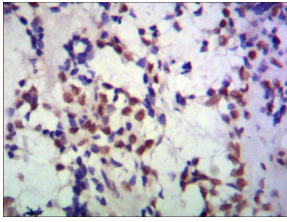
WB: 1:1000 - 1:2000

Not yet tested in other applications.

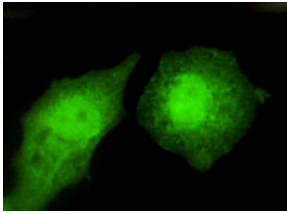
### Images



Western Blot analysis using TBL1XR1 Monoclonal antibody against mouse brain, mouse heart, K562 cell lysate.



Immunohistochemistry analysis of paraffin-embedded human breast cancer using TBL1XR1 Monoclonal antibody.



Immunofluorescence analysis of HeLa cells using TBL1XR1 Monoclonal antibody.

### Storage

-20°C for one year

501 Changsheng S Rd, Nanhu Dist, Jiaxing, Zhejiang, China

Tel: 86 21 31007137 | E-mail: [save@bt-laboratory.com](mailto:save@bt-laboratory.com) | [www.bt-laboratory.com](http://www.bt-laboratory.com)